

sxr Uranium One Inc.
Suite 1610,390 Bay Street
Toronto, Ontario, Canada M5H 2Y2

**Dominion Project - Drill Program Results Considered for the January 2007
Resource Update**

X Co-ordinate	Y Co-ordinate	Z Co-ordinate (mamsl)	Borehole Number	Composite Width (cm)	Au cmg/tonne	U ₃ O ₈ cmkg/tonne	Reef Unit	Channel Width (cm)	U ₃ O ₈ kg/tonne	Au g/tonne	Area
60,205.9	2,974,393.0	1,434.2	DDR007D0	160	125	95	Upper	242	0.60	0.78	Dominion
60,205.9	2,974,393.0	1,434.2	DDR007D0	147	35	31	Lower	147	0.21	0.24	Dominion
60,204.9	2,974,393.0	1,434.2	DDR007D1	160	146	145	Upper	243	0.91	0.91	Dominion
60,204.9	2,974,393.0	1,434.2	DDR007D1	159	52	46	Lower	159	0.29	0.33	Dominion
60,059.6	2,974,634.8	1,432.4	DDR008D0	160	331	157	Upper	163	0.98	2.07	Dominion
60,059.6	2,974,634.8	1,432.4	DDR008D0	160	216	60	Lower	210	0.37	1.35	Dominion
60,346.1	2,974,646.0	1,432.6	DDR009D0	160	4	25	Upper	236	0.16	0.02	Dominion
60,346.1	2,974,646.0	1,432.6	DDR009D0	160	152	62	Lower	191	0.39	0.95	Dominion
60,345.1	2,974,646.0	1,432.6	DDR009D1	160	6	25	Upper	242	0.16	0.04	Dominion
60,345.1	2,974,646.0	1,432.6	DDR009D1	160	136	62	Lower	212	0.39	0.85	Dominion
60,341.7	2,974,924.0	1,430.8	DDR010D0	160	59	43	Upper	170	0.27	0.37	Dominion
60,341.7	2,974,924.0	1,430.8	DDR010D0	126	44	42	Lower	126	0.34	0.35	Dominion
60,340.7	2,974,924.0	1,430.8	DDR010D1	160	64	42	Upper	171	0.26	0.40	Dominion
60,340.7	2,974,924.0	1,430.8	DDR010D1	Faulted			Lower	Faulted			Dominion
60,140.8	2,974,933.5	1,430.8	DDR011AD0	160	66	51	Upper	236	0.32	0.41	Dominion
60,140.8	2,974,933.5	1,430.8	DDR011AD0	Faulted			Lower	Faulted			Dominion
60,139.8	2,974,933.5	1,430.8	DDR011AD1	155	79	49	Upper	155	0.32	0.51	Dominion
60,139.8	2,974,933.5	1,430.8	DDR011AD1	100	17	12	Lower	71	0.12	0.17	Dominion
60,026.0	2,974,920.8	1,431.1	DDR012D0	101	61	32	Upper	101	0.32	0.60	Dominion
60,026.0	2,974,920.8	1,431.1	DDR012D0	160	383	15	Lower	332	0.10	2.40	Dominion
60,146.2	2,975,149.5	1,429.7	DDR013D0	160	56	38	Upper	193	0.24	0.35	Dominion
60,146.2	2,975,149.5	1,429.7	DDR013D0	160	26	45	Lower	257	0.28	0.16	Dominion
60,145.2	2,975,149.5	1,429.7	DDR013D1	160	55	49	Upper	185	0.31	0.34	Dominion
60,145.2	2,975,149.5	1,429.7	DDR013D1	160	11	13	Lower	295	0.08	0.07	Dominion
60,364.4	2,975,167.3	1,429.4	DDR014D0	Faulted			Upper	Faulted			Dominion
60,364.4	2,975,167.3	1,429.4	DDR014D0	100	231	8	Lower	36	0.08	2.31	Dominion
60,363.4	2,975,167.3	1,429.4	DDR014D1	Faulted			Upper	Faulted			Dominion
60,363.4	2,975,167.3	1,429.4	DDR014D1	100	159	8	Lower	35	0.08	1.59	Dominion
60,355.4	2,975,415.0	1,428.1	DDR015D0	160	42	63	Upper	236	0.40	0.26	Dominion
60,355.4	2,975,415.0	1,428.1	DDR015D0	100	0	0	Lower	0	0.00	0.00	Dominion
60,354.4	2,975,415.0	1,428.1	DDR015D1	160	33	59	Upper	232	0.37	0.21	Dominion
60,354.4	2,975,415.0	1,428.1	DDR015D1	100	0	0	Lower	0	0.00	0.00	Dominion
60,166.0	2,975,412.2	1,429.0	DDR016D0	135	28	44	Upper	135	0.33	0.21	Dominion
60,166.0	2,975,412.2	1,429.0	DDR016D0	100	235	6	Lower	90	0.06	2.35	Dominion
60,165.0	2,975,412.2	1,429.0	DDR016D1	147	39	43	Upper	147	0.29	0.26	Dominion
60,163.0	2,975,412.2	1,429.0	DDR016D3	160	33	48	Upper	163	0.30	0.21	Dominion
60,163.0	2,975,412.2	1,429.0	DDR016D3	100	169	7	Lower	88	0.07	1.69	Dominion
60,341.1	2,975,673.3	1,426.4	DDR017D0	160	30	61	Upper	243	0.38	0.19	Dominion

X Co-ordinate	Y Co-ordinate	Z Co-ordinate (mamsl)	Borehole Number	Composite Width (cm)	Au cmg/tonne	U ₃ O ₈ cmkg/tonne	Reef Unit	Channel Width (cm)	U ₃ O ₈ kg/tonne	Au g/tonne	Area
60,341.1	2,975,673.3	1,426.4	DDR017D0	100	35	10	Lower	72	0.10	0.35	Dominion
60,340.1	2,975,673.3	1,426.4	DDR017D1	160	29	48	Upper	270	0.30	0.18	Dominion
60,340.1	2,975,673.3	1,426.4	DDR017D1	100	88	12	Lower	63	0.12	0.88	Dominion
60,339.1	2,975,673.3	1,426.4	DDR017D2	160	609	43	Upper	270	0.27	3.81	Dominion
60,339.1	2,975,673.3	1,426.4	DDR017D2	100	52	11	Lower	60	0.11	0.52	Dominion
60,171.1	2,975,655.3	1,427.3	DDR018D0	122	105	96	Upper	122	0.78	0.86	Dominion
60,171.1	2,975,655.3	1,427.3	DDR018D0	100	8	1	Lower	15	0.01	0.08	Dominion
60,170.1	2,975,655.3	1,427.3	DDR018D1	127	83	94	Upper	127	0.74	0.65	Dominion
60,170.1	2,975,655.3	1,427.3	DDR018D1	100	94	1	Lower	14	0.01	0.94	Dominion
60,233.1	2,975,895.3	1,425.2	DDR019D0	Abandoned							Dominion
60,232.1	2,975,895.3	1,425.2	DDR019D1	160	19	51	Upper	280	0.32	0.12	Dominion
60,232.1	2,975,895.3	1,425.2	DDR019D1	160	60	62	Lower	376	0.39	0.38	Dominion
60,231.1	2,975,895.3	1,425.2	DDR019D2	160	15	38	Upper	282	0.24	0.10	Dominion
60,231.1	2,975,895.3	1,425.2	DDR019D2	160	56	79	Lower	358	0.50	0.35	Dominion
59,985.6	2,976,212.2	1,422.5	DDR020D0	100	473	22	Upper	56	0.22	4.73	Dominion
59,985.6	2,976,212.2	1,422.5	DDR020D0	100	0	0	Lower	0	0.00	0.00	Dominion
60,151.9	2,976,193.4	1,423.4	DDR021D0	Abandoned							Dominion
60,120.9	2,972,095.5	1,452.9	DDR022D0	100	47	45	Upper	20	0.45	0.47	Dominion
60,120.9	2,972,095.5	1,452.9	DDR022D0	100	6	7	Lower	29	0.07	0.06	Dominion
60,119.9	2,972,095.5	1,452.9	DDR022D1	Abandoned							Dominion
60,118.9	2,972,095.5	1,452.9	DDR022D2	100	84	60	Upper	87	0.60	0.84	Dominion
60,118.9	2,972,095.5	1,452.9	DDR022D2	100	11	10	Lower	28	0.10	0.11	Dominion
59,902.5	2,973,209.2	1,445.0	DDR023D0	100	71	3	Upper	43	0.03	0.71	Dominion
59,902.5	2,973,209.2	1,445.0	DDR023D0	100	0	0	Lower	0	0.00	0.00	Dominion
59,904.0	2,972,960.1	1,446.3	DDR024D0	100	22	2	Upper	18	0.02	0.22	Dominion
59,904.0	2,972,960.1	1,446.3	DDR024D0	100	0	0	Lower	0	0.00	0.00	Dominion
60,119.9	2,972,295.8	1,451.9	DDR025D0	131	124	78	Upper	131	0.59	0.95	Dominion
60,119.9	2,972,295.8	1,451.9	DDR025D0	100	0	0	Lower	0	0.00	0.00	Dominion
60,118.9	2,972,295.8	1,451.9	DDR025D1	134	142	73	Upper	134	0.54	1.06	Dominion
60,118.9	2,972,295.8	1,451.9	DDR025D1	100	0	0	Lower	0	0.00	0.00	Dominion
60,311.6	2,972,294.9	1,453.6	DDR026D0	125	19	32	Upper	125	0.26	0.15	Dominion
60,311.6	2,972,294.9	1,453.6	DDR026D0	100	0	2	Lower	16	0.02	0.00	Dominion
60,310.6	2,972,294.9	1,453.6	DDR026D1	142	13	29	Upper	142	0.21	0.09	Dominion
60,310.6	2,972,294.9	1,453.6	DDR026D1	100	1	7	Lower	14	0.07	0.01	Dominion
60,119.3	2,972,496.2	1,450.6	DDR027D0	100	36	20	Upper	21	0.20	0.36	Dominion
60,119.3	2,972,496.2	1,450.6	DDR027D0	100	0	0	Lower	0	0.00	0.00	Dominion
60,118.3	2,972,496.2	1,450.6	DDR027D1	100	17	20	Upper	17	0.20	0.17	Dominion
60,118.3	2,972,496.2	1,450.6	DDR027D1	100	0	0	Lower	0	0.00	0.00	Dominion
60,310.2	2,972,496.5	1,451.7	DDR028D0	160	96	62	Upper	186	0.39	0.60	Dominion
60,310.2	2,972,496.5	1,451.7	DDR028D0	100	52	167	Lower	47	1.67	0.52	Dominion
60,309.2	2,972,496.5	1,451.7	DDR028D1	160	145	63	Upper	187	0.40	0.91	Dominion
60,309.2	2,972,496.5	1,451.7	DDR028D1	100	21	137	Lower	42	1.37	0.21	Dominion
59,922.4	2,972,780.1	1,447.3	DDR029D0	100	1	1	Upper	20	0.01	0.01	Dominion
59,922.4	2,972,780.1	1,447.3	DDR029D0	100	0	0	Lower	0	0.00	0.00	Dominion
60,227.8	2,972,705.5	1,450.0	DDR030D0	100	30	17	Upper	91	0.17	0.30	Dominion
60,227.8	2,972,705.5	1,450.0	DDR030D0	100	0	1	Lower	25	0.01	0.00	Dominion
60,226.8	2,972,705.5	1,450.0	DDR030D1	101	15	10	Upper	101	0.10	0.14	Dominion

X Co-ordinate	Y Co-ordinate	Z Co-ordinate (mamsl)	Borehole Number	Composite Width (cm)	Au cmg/tonne	U ₃ O ₈ cmkg/tonne	Reef Unit	Channel Width (cm)	U ₃ O ₈ kg/tonne	Au g/tonne	Area
60,226.8	2,972,705.5	1,450.0	DDR030D1	100	0	0	Lower	13	0.00	0.00	Dominion
60,739.1	2,973,270.0	1,444.2	DDR031D0	160	149	137	Upper	166	0.86	0.93	Dominion
60,739.1	2,973,270.0	1,444.2	DDR031D0	100	0	0	Lower	0	0.00	0.00	Dominion
60,738.1	2,973,270.0	1,444.2	DDR031D1	160	155	153	Upper	160	0.96	0.97	Dominion
60,738.1	2,973,270.0	1,444.2	DDR031D1	100	0	0	Lower	0	0.00	0.00	Dominion
60,737.1	2,973,270.0	1,444.2	DDR031D3	160	144	121	Upper	163	0.76	0.90	Dominion
60,737.1	2,973,270.0	1,444.2	DDR031D3	100	0	0	Lower	0	0.00	0.00	Dominion
60,252.0	2,976,408.3	1,421.2	DDR032D0	160	47	36	Upper	196	0.22	0.29	Dominion
60,252.0	2,976,408.3	1,421.2	DDR032D0	100	0	0	Lower	0	0.00	0.00	Dominion
60,251.0	2,976,408.3	1,421.2	DDR032D1	160	51	49	Upper	188	0.30	0.32	Dominion
60,251.0	2,976,408.3	1,421.2	DDR032D1	100	0	0	Lower	0	0.00	0.00	Dominion
59,978.4	2,976,427.5	1,421.6	DDR033D0	160	255	92	Upper	162	0.58	1.59	Dominion
59,978.4	2,976,427.5	1,421.6	DDR033D0	100	0	0	Lower	0	0.00	0.00	Dominion
60,741.0	2,973,071.1	1,446.8	DDR034D0	160	68	164	Upper	250	1.02	0.42	Dominion
60,740.0	2,973,071.1	1,446.8	DDR034D1	160	3	8	Lower	461	0.05	0.02	Dominion
60,739.0	2,973,071.1	1,446.8	DDR034D2	160	64	153	Upper	242	0.96	0.40	Dominion
60,739.0	2,973,071.1	1,446.8	DDR034D2	160	8	8	Lower	462	0.05	0.05	Dominion
60,738.0	2,973,071.1	1,446.8	DDR034D3	160	81	136	Upper	248	0.85	0.51	Dominion
60,740.0	2,973,468.5	1,441.9	DDR035D0	Faulted			Upper	Faulted			Dominion
60,740.0	2,973,468.5	1,441.9	DDR035D0	Faulted			Lower	Faulted			Dominion
60,739.0	2,973,468.5	1,441.9	DDR035D1	160	186	44	Upper	289	0.27	1.16	Dominion
60,739.0	2,973,468.5	1,441.9	DDR035D1	160	14	4	Lower	511	0.02	0.09	Dominion
60,738.0	2,973,468.5	1,441.9	DDR035D2	160	98	37	Upper	265	0.23	0.61	Dominion
60,738.0	2,973,468.5	1,441.9	DDR035D2	160	16	4	Lower	515	0.03	0.10	Dominion
60,739.1	2,972,559.9	1,453.1	DDR036D0	160	37	36	Upper	257	0.22	0.23	Dominion
60,739.1	2,972,559.9	1,453.1	DDR036D0	100	0	1	Lower	24	0.01	0.00	Dominion
60,738.1	2,972,559.9	1,453.1	DDR036D1	160	67	51	Upper	234	0.32	0.42	Dominion
60,738.1	2,972,559.9	1,453.1	DDR036D1	100	23	16	Lower	21	0.16	0.23	Dominion
60,182.6	2,976,076.4	1,424.1	DDR037D0	160	26	42	Upper	217	0.26	0.17	Dominion
60,182.6	2,976,076.4	1,424.1	DDR037D0	100	0	0	Lower	0	0.00	0.00	Dominion
60,181.6	2,976,076.4	1,424.1	DDR037D1	160	18	32	Upper	215	0.20	0.11	Dominion
60,181.6	2,976,076.4	1,424.1	DDR037D1	100	0	0	Lower	0	0.00	0.00	Dominion
60,269.9	2,975,756.2	1,426.0	DDR039D0	160	16	56	Upper	244	0.35	0.10	Dominion
60,269.9	2,975,756.2	1,426.0	DDR039D0	100	268	11	Lower	52	0.11	2.68	Dominion
60,268.9	2,975,756.2	1,426.0	DDR039D1	160	24	53	Upper	212	0.33	0.15	Dominion
60,268.9	2,975,756.2	1,426.0	DDR039D1	100	310	11	Lower	56	0.11	3.10	Dominion
60,267.8	2,975,525.0	1,427.7	DDR040D0	160	17	50	Upper	209	0.31	0.11	Dominion
60,267.8	2,975,525.0	1,427.7	DDR040D0	100	646	11	Lower	32	0.11	6.46	Dominion
60,266.8	2,975,525.0	1,427.7	DDR040D1	160	12	45	Upper	215	0.28	0.08	Dominion
60,266.8	2,975,525.0	1,427.7	DDR040D1	100	30	5	Lower	49	0.05	0.30	Dominion
60,264.7	2,975,277.4	1,429.1	DDR041D0	Abandoned							Dominion
60,257.0	2,975,014.1	1,430.3	DDR042D0	Abandoned							Dominion
60,641.2	2,975,837.0	1,423.9	DDR043D0	160	129	136	Upper	319	0.85	0.80	Dominion
60,641.2	2,975,837.0	1,423.9	DDR043D0	123	272	18	Lower	123	0.15	2.21	Dominion
60,640.2	2,975,837.0	1,423.9	DDR043D1	160	123	104	Upper	310	0.65	0.77	Dominion
60,640.2	2,975,837.0	1,423.9	DDR043D1	117	311	23	Lower	117	0.20	2.67	Dominion
60,668.3	2,975,648.0	1,425.2	DDR044D0	160	14	27	Upper	237	0.17	0.08	Dominion

X Co-ordinate	Y Co-ordinate	Z Co-ordinate (mamsl)	Borehole Number	Composite Width (cm)	Au cmg/tonne	U ₃ O ₈ cmkg/tonne	Reef Unit	Channel Width (cm)	U ₃ O ₈ kg/tonne	Au g/tonne	Area
60,668.3	2,975,648.0	1,425.2	DDR044D0	110	25	21	Lower	110	0.19	0.22	Dominion
60,667.3	2,975,648.0	1,425.2	DDR044D1	160	17	29	Upper	251	0.18	0.10	Dominion
60,667.3	2,975,648.0	1,425.2	DDR044D1	105	14	11	Lower	105	0.11	0.13	Dominion
60,659.5	2,975,398.3	1,427.0	DDR045D0	160	121	77	Upper	608	0.48	0.76	Dominion
60,659.5	2,975,398.3	1,427.0	DDR045D0	100	0	0	Lower	0	0.00	0.00	Dominion
60,658.5	2,975,398.3	1,427.0	DDR045D1	160	112	74	Upper	577	0.46	0.70	Dominion
60,658.5	2,975,398.3	1,427.0	DDR045D1	100	0	0	Lower	0	0.00	0.00	Dominion
60,667.5	2,975,193.8	1,428.4	DDR046D0	160	45	70	Upper	257	0.44	0.28	Dominion
60,667.5	2,975,193.8	1,428.4	DDR046D0	160	632	30	Lower	310	0.19	3.95	Dominion
60,666.5	2,975,193.8	1,428.4	DDR046D1	160	26	60	Upper	300	0.38	0.17	Dominion
60,666.5	2,975,193.8	1,428.4	DDR046D1	160	377	19	Lower	354	0.12	2.36	Dominion
60,637.6	2,974,884.9	1,430.3	DDR047D0	160	98	85	Upper	167	0.53	0.62	Dominion
60,637.6	2,974,884.9	1,430.3	DDR047D0	160	155	32	Lower	330	0.20	0.97	Dominion
60,636.6	2,974,884.9	1,430.3	DDR047D1	160	112	72	Upper	162	0.45	0.70	Dominion
60,636.6	2,974,884.9	1,430.3	DDR047D1	160	45	28	Lower	317	0.18	0.28	Dominion
60,635.7	2,974,609.9	1,432.5	DDR048D0	155	27	25	Upper	155	0.16	0.17	Dominion
60,635.7	2,974,609.9	1,432.5	DDR048D0	100	25	12	Lower	35	0.12	0.25	Dominion
60,634.7	2,974,609.9	1,432.5	DDR048D1	156	29	18	Upper	156	0.11	0.19	Dominion
60,634.7	2,974,609.9	1,432.5	DDR048D1	100	27	11	Lower	41	0.11	0.27	Dominion
60,627.4	2,974,382.3	1,434.0	DDR049D0	100	2	9	Upper	33	0.09	0.02	Dominion
60,627.4	2,974,382.3	1,434.0	DDR049D0	Faulted			Lower	Faulted			Dominion
60,515.1	2,972,494.1	1,453.1	DDR050D0	111	96	70	Upper	111	0.63	0.86	Dominion
60,515.1	2,972,494.1	1,453.1	DDR050D0	100	0	2	Lower	14	0.02	0.00	Dominion
60,514.1	2,972,494.1	1,453.1	DDR050D1	109	144	80	Upper	109	0.73	1.32	Dominion
60,514.1	2,972,494.1	1,453.1	DDR050D1	100	0	0	Lower	17	0.00	0.00	Dominion
60,200.5	2,974,648.2	1,432.5	DDR051D0	Abandoned							Dominion
60,200.9	2,974,234.5	1,436.1	DDR052D0	Abandoned							Dominion
60,034.8	2,974,232.4	1,436.6	DDR053D0	100	40	16	Upper	58	0.16	0.40	Dominion
60,034.8	2,974,232.4	1,436.6	DDR053D0	100	0	1	Lower	49	0.01	0.00	Dominion
60,514.2	2,972,157.7	1,456.2	DDR055D0	129	200	99	Upper	129	0.77	1.55	Dominion
60,513.2	2,972,157.7	1,456.2	DDR055D1	160	477	129	Upper	170	0.81	2.98	Dominion
60,513.2	2,972,157.7	1,456.2	DDR055D1	100	46	58	Lower	86	0.58	0.46	Dominion
60,512.2	2,972,157.7	1,456.2	DDR055D2	141	144	82	Upper	141	0.58	1.02	Dominion
60,512.2	2,972,157.7	1,456.2	DDR055D2	100	55	62	Lower	87	0.62	0.55	Dominion
61,197.7	2,972,348.4	1,455.3	DDR056D0	160	97	72	Upper	235	0.45	0.60	Dominion
61,197.7	2,972,348.4	1,455.3	DDR056D0	100	24	15	Lower	18	0.15	0.24	Dominion
61,196.7	2,972,348.4	1,455.3	DDR056D1	160	82	64	Upper	243	0.40	0.51	Dominion
61,196.7	2,972,348.4	1,455.3	DDR056D1	100	27	12	Lower	18	0.12	0.27	Dominion
61,211.9	2,972,753.4	1,448.4	DDR057D0	129	68	77	Upper	129	0.60	0.53	Dominion
61,211.9	2,972,753.4	1,448.4	DDR057D0	100	0	0	Lower	0	0.00	0.00	Dominion
61,210.9	2,972,753.4	1,448.4	DDR057D1	117	65	73	Upper	117	0.62	0.55	Dominion
61,210.9	2,972,753.4	1,448.4	DDR057D1	100	0	0	Lower	0	0.00	0.00	Dominion
61,223.3	2,973,076.2	1,442.6	DDR058D0	160	110	64	Upper	169	0.40	0.69	Dominion
61,223.3	2,973,076.2	1,442.6	DDR058D0	100	75	29	Lower	88	0.29	0.75	Dominion
61,222.3	2,973,076.2	1,442.6	DDR058D2	160	146	79	Upper	177	0.50	0.91	Dominion
61,222.3	2,973,076.2	1,442.6	DDR058D2	100	180	40	Lower	85	0.40	1.80	Dominion
60,915.7	2,975,838.9	1,421.4	DDR059D0	108	30	18	Upper	108	0.17	0.27	Dominion

X Co-ordinate	Y Co-ordinate	Z Co-ordinate (mamsl)	Borehole Number	Composite Width (cm)	Au cmg/tonne	U ₃ O ₈ cmkg/tonne	Reef Unit	Channel Width (cm)	U ₃ O ₈ kg/tonne	Au g/tonne	Area
60,915.7	2,975,838.9	1,421.4	DDR059D0	100	17	4	Lower	18	0.04	0.17	Dominion
60,914.7	2,975,838.9	1,421.4	DDR059D1	112	87	33	Upper	112	0.30	0.78	Dominion
60,914.7	2,975,838.9	1,421.4	DDR059D1	100	5	5	Lower	28	0.05	0.05	Dominion
61,085.4	2,975,530.3	1,422.4	DDR060D0	160	116	57	Upper	305	0.36	0.72	Dominion
61,085.4	2,975,530.3	1,422.4	DDR060D0	100	0	0	Lower	19	0.00	0.00	Dominion
61,084.4	2,975,530.3	1,422.4	DDR060D1	160	94	79	Upper	304	0.49	0.59	Dominion
61,084.4	2,975,530.3	1,422.4	DDR060D1	100	21	2	Lower	19	0.02	0.21	Dominion
61,083.4	2,975,530.3	1,422.4	DDR060D2	160	109	74	Upper	323	0.46	0.68	Dominion
61,083.4	2,975,530.3	1,422.4	DDR060D2	100	30	6	Lower	20	0.06	0.30	Dominion
61,404.1	2,975,293.2	1,418.9	DDR061D0	140	16	28	Upper	140	0.20	0.12	Dominion
61,404.1	2,975,293.2	1,418.9	DDR061D0	156	179	61	Lower	156	0.39	1.15	Dominion
61,403.1	2,975,293.2	1,418.9	DDR061D1	144	52	47	Upper	144	0.33	0.36	Dominion
61,403.1	2,975,293.2	1,418.9	DDR061D1	160	113	49	Lower	164	0.30	0.71	Dominion
61,402.1	2,975,293.2	1,418.9	DDR061D2	153	42	52	Upper	153	0.34	0.28	Dominion
61,402.1	2,975,293.2	1,418.9	DDR061D2	153	106	48	Lower	153	0.31	0.69	Dominion
61,501.0	2,975,612.7	1,415.1	DDR062D0	140	35	17	Upper	140	0.12	0.25	Dominion
61,501.0	2,975,612.7	1,415.1	DDR062D0	160	61	21	Lower	200	0.13	0.38	Dominion
61,500.0	2,975,612.7	1,415.1	DDR062D1	142	28	17	Upper	142	0.12	0.20	Dominion
61,500.0	2,975,612.7	1,415.1	DDR062D1	133	64	23	Lower	133	0.17	0.48	Dominion
61,499.0	2,975,612.7	1,415.1	DDR062D2	147	52	24	Upper	147	0.16	0.35	Dominion
61,499.0	2,975,612.7	1,415.1	DDR062D2	160	64	37	Lower	211	0.23	0.40	Dominion
61,566.0	2,976,010.5	1,414.9	DDR063D0	Faulted			Upper	Faulted			Dominion
61,566.0	2,976,010.5	1,414.9	DDR063D0	100	143	7	Lower	36	0.07	1.43	Dominion
61,565.0	2,976,010.5	1,414.9	DDR063D1	100	60	7	Lower	69	0.07	0.60	Dominion
60,904.5	2,970,215.5	1,473.4	DDR066D0	160	33	52	Upper	348	0.32	0.21	Dominion
60,904.5	2,970,215.5	1,473.4	DDR066D0	136	17	72	Lower	136	0.53	0.13	Dominion
61,679.9	2,970,557.5	1,470.0	DDR068D0	160	48	49	Upper	160	0.31	0.30	Dominion
61,679.9	2,970,557.5	1,470.0	DDR068D0	Faulted			Lower	Faulted			Dominion
61,678.9	2,970,557.5	1,470.0	DDR068D1	144	44	36	Upper	144	0.25	0.30	Dominion
61,677.9	2,970,557.5	1,470.0	DDR068D2	160	60	47	Upper	193	0.29	0.37	Dominion
61,034.7	2,970,806.9	1,470.0	DDR069D0	160	96	98	Upper	279	0.61	0.60	Dominion
61,034.7	2,970,806.9	1,470.0	DDR069D0	160	70	182	Lower	182	1.14	0.44	Dominion
61,033.7	2,970,806.9	1,470.0	DDR069D1	160	68	75	Upper	283	0.47	0.43	Dominion
61,033.7	2,970,806.9	1,470.0	DDR069D1	160	74	151	Lower	270	0.94	0.46	Dominion
60,510.5	2,970,841.0	1,467.3	DDR070D0	160	64	39	Upper	353	0.25	0.40	Dominion
60,510.5	2,970,841.0	1,467.3	DDR070D0	100	5	106	Lower	31	1.06	0.05	Dominion
61,261.6	2,970,283.2	1,476.0	DDR077D0	160	24	45	Upper	362	0.28	0.15	Dominion
61,261.6	2,970,283.2	1,476.0	DDR077D0	109	71	91	Lower	109	0.83	0.66	Dominion
61,299.0	2,970,897.0	1,474.3	DDR079D0	160	65	59	Upper	380	0.37	0.41	Dominion
61,299.0	2,970,897.0	1,474.3	DDR079D0	100	162	467	Lower	35	4.67	1.62	Dominion
61,298.0	2,970,897.0	1,474.3	DDR079D1	160	47	72	Upper	394	0.45	0.29	Dominion
61,298.0	2,970,897.0	1,474.3	DDR079D1	100	7	12	Lower	56	0.12	0.07	Dominion
61,693.1	2,970,890.6	1,473.7	DDR080D0	160	54	61	Upper	261	0.38	0.34	Dominion
61,693.1	2,970,890.6	1,473.7	DDR080D0	100	23	50	Lower	44	0.50	0.23	Dominion
61,692.1	2,970,890.6	1,473.7	DDR080D1	160	55	58	Upper	251	0.36	0.35	Dominion
61,692.1	2,970,890.6	1,473.7	DDR080D1	100	27	19	Lower	38	0.19	0.27	Dominion
61,691.1	2,970,890.6	1,473.7	DDR080D2	160	64	67	Upper	247	0.42	0.40	Dominion

X Co-ordinate	Y Co-ordinate	Z Co-ordinate (mamsl)	Borehole Number	Composite Width (cm)	Au cmg/tonne	U ₃ O ₈ cmkg/tonne	Reef Unit	Channel Width (cm)	U ₃ O ₈ kg/tonne	Au g/tonne	Area
61,691.1	2,970,890.6	1,473.7	DDR080D2	100	27	15	Lower	28	0.15	0.27	Dominion
60,036.0	2,969,354.5	1,450.8	DDR081D0	144	41	40	Upper	144	0.28	0.29	Dominion
60,036.0	2,969,354.5	1,450.8	DDR081D0	129	129	50	Lower	129	0.39	1.00	Dominion
59,860.0	2,969,219.3	1,445.2	DDR082D0	160	60	8	Upper	163	0.05	0.37	Dominion
59,860.0	2,969,219.3	1,445.2	DDR082D0	100	0	0	Lower	0	0.00	0.00	Dominion
60,072.0	2,969,633.7	1,457.3	DDR083D0	160	29	28	Upper	194	0.18	0.18	Dominion
60,072.0	2,969,633.7	1,457.3	DDR083D0	100	0	0	Lower	0	0.00	0.00	Dominion
60,071.0	2,969,633.7	1,457.3	DDR083D1	160	59	39	Upper	182	0.24	0.37	Dominion
60,071.0	2,969,633.7	1,457.3	DDR083D1	100	0	0	Lower	0	0.00	0.00	Dominion
59,759.7	2,969,050.3	1,439.9	DDR084D0	100	21	15	Upper	88	0.15	0.21	Dominion
59,759.7	2,969,050.3	1,439.9	DDR084D0	100	0	0	Lower	0	0.00	0.00	Dominion
61,003.6	2,977,031.0	1,412.1	DDR095D0	101	132	55	Upper	101	0.54	1.31	Dominion
61,003.6	2,977,031.0	1,412.1	DDR095D0	100	0	0	Lower	0	0.00	0.00	Dominion
61,002.6	2,977,031.0	1,412.1	DDR095D1	100	96	45	Upper	99	0.45	0.96	Dominion
61,002.6	2,977,031.0	1,412.1	DDR095D1	100	0	0	Lower	0	0.00	0.00	Dominion
60,877.8	2,975,023.9	1,427.8	DDR108D0	131	115	62	Upper	131	0.48	0.88	Dominion
60,877.8	2,975,023.9	1,427.8	DDR108D0	100	0	0	Lower	0	0.00	0.00	Dominion
60,876.8	2,975,023.9	1,427.8	DDR108D1	105	35	41	Upper	105	0.39	0.33	Dominion
60,876.8	2,975,023.9	1,427.8	DDR108D1	100	0	0	Lower	0	0.00	0.00	Dominion
60,026.0	2,974,826.8	1,431.4	DDR114D0	160	96	72	Upper	213	0.45	0.60	Dominion
60,026.0	2,974,826.8	1,431.4	DDR114D0	160	704	43	Lower	162	0.27	4.40	Dominion
60,025.0	2,974,826.8	1,431.4	DDR114D1	160	78	38	Upper	176	0.24	0.48	Dominion
60,025.0	2,974,826.8	1,431.4	DDR114D1	147	647	48	Lower	147	0.33	4.41	Dominion
60,042.5	2,974,729.9	1,431.9	DDR115D0	160	228	64	Upper	165	0.40	1.42	Dominion
60,042.5	2,974,729.9	1,431.9	DDR115D0	160	78	39	Lower	197	0.24	0.49	Dominion
60,041.5	2,974,729.9	1,431.9	DDR115D1	160	303	76	Upper	171	0.47	1.89	Dominion
60,041.5	2,974,729.9	1,431.9	DDR115D1	160	322	33	Lower	212	0.20	2.01	Dominion
60,161.4	2,974,787.5	1,432.1	DDR116D0	160	68	34	Upper	200	0.21	0.42	Dominion
60,161.4	2,974,787.5	1,432.1	DDR116D0	160	109	70	Lower	442	0.44	0.68	Dominion
54,723.4	2,965,394.8	1,393.0	DRT001D0	100	65	40	Upper	61	0.40	0.65	Rietkuil
54,723.4	2,965,394.8	1,393.0	DRT001D0	100	4	9	Lower	18	0.09	0.04	Rietkuil
54,594.0	2,965,197.0	1,399.6	DRT002D0	160	30	47	Upper	204	0.29	0.19	Rietkuil
54,594.0	2,965,197.0	1,399.6	DRT002D0	100	1	2	Lower	19	0.02	0.01	Rietkuil
54,354.1	2,965,296.2	1,391.5	DRT003D0	100	55	37	Upper	100	0.37	0.55	Rietkuil
54,354.1	2,965,296.2	1,391.5	DRT003D0	100	69	23	Lower	19	0.23	0.69	Rietkuil
54,353.1	2,965,295.2	1,391.5	DRT003D1	100	54	49	Upper	92	0.49	0.54	Rietkuil
54,353.1	2,965,295.2	1,391.5	DRT003D1	100	250	37	Lower	18	0.37	2.50	Rietkuil
54,534.0	2,965,596.3	1,390.3	DRT004D0	Faulted			Upper	Faulted			Rietkuil
54,534.0	2,965,596.3	1,390.3	DRT004D0	Faulted			Lower	Faulted			Rietkuil
54,533.0	2,965,595.3	1,390.3	DRT004D1	Faulted			Upper	Faulted			Rietkuil
54,533.0	2,965,595.3	1,390.3	DRT004D1	Faulted			Lower	Faulted			Rietkuil
54,795.3	2,965,608.9	1,391.4	DRT005D0	100	51	102	Upper	84	1.02	0.51	Rietkuil
54,795.3	2,965,608.9	1,391.4	DRT005D0	100	10	21	Lower	19	0.21	0.10	Rietkuil
54,794.3	2,965,607.9	1,391.4	DRT005D1	106	41	81	Upper	106	0.76	0.38	Rietkuil
54,794.3	2,965,607.9	1,391.4	DRT005D1	Faulted			Lower	Faulted			Rietkuil
54,852.6	2,965,460.6	1,392.6	DRT006D0	Faulted			Upper	Faulted			Rietkuil
54,852.6	2,965,460.6	1,392.6	DRT006D0	100	285	11	Lower	15	0.11	2.85	Rietkuil

X Co-ordinate	Y Co-ordinate	Z Co-ordinate (mamsl)	Borehole Number	Composite Width (cm)	Au cmg/tonne	U ₃ O ₈ cmkg/tonne	Reef Unit	Channel Width (cm)	U ₃ O ₈ kg/tonne	Au g/tonne	Area
54,468.0	2,965,035.4	1,403.2	DRT007D0	160	12	16	Upper	176	0.10	0.07	Rietkuil
54,468.0	2,965,035.4	1,403.2	DRT007D0	100	8	8	Lower	17	0.08	0.08	Rietkuil
54,467.0	2,965,034.4	1,403.2	DRT007D1	140	26	22	Upper	140	0.16	0.18	Rietkuil
54,467.0	2,965,034.4	1,403.2	DRT007D1	100	3	12	Lower	17	0.12	0.03	Rietkuil
54,157.0	2,965,090.8	1,397.8	DRT008D0	Faulted			Upper	Faulted			Rietkuil
54,157.0	2,965,090.8	1,397.8	DRT008D0	Faulted			Lower	Faulted			Rietkuil
54,934.5	2,965,731.9	1,391.7	DRT009D0	Faulted			Upper	Faulted			Rietkuil
54,934.5	2,965,731.9	1,391.7	DRT009D0	Faulted			Lower	Faulted			Rietkuil
54,747.5	2,965,810.9	1,391.0	DRT010D0	Faulted			Upper	Faulted			Rietkuil
54,747.5	2,965,810.9	1,391.0	DRT010D0	Faulted			Lower	Faulted			Rietkuil
54,746.5	2,965,809.9	1,391.0	DRT010D1	Faulted			Upper	Faulted			Rietkuil
54,746.5	2,965,809.9	1,391.0	DRT010D1	Faulted			Lower	Faulted			Rietkuil
55,084.4	2,965,880.0	1,393.8	DRT011D0	Faulted			Upper	Faulted			Rietkuil
55,084.4	2,965,880.0	1,393.8	DRT011D0	Faulted			Lower	Faulted			Rietkuil
54,185.0	2,964,842.1	1,404.6	DRT012D0	Faulted			Upper	Faulted			Rietkuil
54,185.0	2,964,842.1	1,404.6	DRT012D0	Faulted			Lower	Faulted			Rietkuil
54,184.0	2,964,841.1	1,404.6	DRT012D1	100	116	66	Upper	55	0.66	1.16	Rietkuil
54,184.0	2,964,841.1	1,404.6	DRT012D1	100	1	3	Lower	25	0.03	0.01	Rietkuil
53,937.3	2,964,476.9	1,409.1	DRT013D0	100	0	0	Upper	0	0.00	0.00	Rietkuil
53,937.3	2,964,476.9	1,409.1	DRT013D0	100	0	0	Lower	0	0.00	0.00	Rietkuil
53,683.5	2,964,469.4	1,406.2	DRT014D0	100	0	0	Upper	0	0.00	0.00	Rietkuil
53,683.5	2,964,469.4	1,406.2	DRT014D0	100	0	0	Lower	0	0.00	0.00	Rietkuil
54,046.7	2,964,644.5	1,406.8	DRT015D0	Faulted			Upper	Faulted			Rietkuil
54,046.7	2,964,644.5	1,406.8	DRT015D0	Faulted			Lower	Faulted			Rietkuil
53,809.3	2,964,762.5	1,401.4	DRT016D0	Faulted			Upper	Faulted			Rietkuil
53,809.3	2,964,762.5	1,401.4	DRT016D0	Faulted			Lower	Faulted			Rietkuil
51,972.9	2,965,764.0	1,399.3	DRT017D0	149	14	52	Upper	149	0.35	0.09	Rietkuil
51,972.9	2,965,764.0	1,399.3	DRT017D0	100	0	0	Lower	0	0.00	0.00	Rietkuil
51,971.9	2,965,763.0	1,399.3	DRT017D1	139	83	54	Upper	139	0.39	0.60	Rietkuil
51,971.9	2,965,763.0	1,399.3	DRT017D1	100	0	0	Lower	0	0.00	0.00	Rietkuil
51,952.5	2,965,084.8	1,412.1	DRT018D0	160	37	68	Upper	174	0.43	0.23	Rietkuil
51,952.5	2,965,084.8	1,412.1	DRT018D0	100	0	0	Lower	0	0.00	0.00	Rietkuil
52,014.1	2,964,947.5	1,413.8	DRT019D0	100	43	52	Upper	25	0.52	0.43	Rietkuil
52,014.1	2,964,947.5	1,413.8	DRT019D0	100	0	0	Lower	0	0.00	0.00	Rietkuil
52,154.6	2,965,452.9	1,403.7	DRT020D0	100	87	83	Upper	51	0.83	0.87	Rietkuil
52,154.6	2,965,452.9	1,403.7	DRT020D0	100	0	0	Lower	0	0.00	0.00	Rietkuil
52,153.6	2,965,451.9	1,403.7	DRT020D0a	100	72	112	Upper	56	1.12	0.72	Rietkuil
52,152.6	2,965,450.9	1,403.7	DRT020D1	100	64	168	Upper	55	1.68	0.64	Rietkuil
52,152.6	2,965,450.9	1,403.7	DRT020D1	100	0	0	Lower	0	0.00	0.00	Rietkuil
52,151.6	2,965,449.9	1,403.7	DRT020D1a	100	77	182	Upper	56	1.82	0.77	Rietkuil
52,329.7	2,964,850.1	1,412.5	DRT021D0	100	14	14	Upper	53	0.14	0.14	Rietkuil
52,329.7	2,964,850.1	1,412.5	DRT021D0	100	5	24	Lower	21	0.24	0.05	Rietkuil
52,328.7	2,964,849.1	1,412.5	DRT021D1	100	15	22	Upper	69	0.22	0.15	Rietkuil
52,328.7	2,964,849.1	1,412.5	DRT021D1	100	3	18	Lower	16	0.18	0.03	Rietkuil
52,045.9	2,964,786.4	1,415.9	DRT022D0	100	123	50	Upper	17	0.50	1.23	Rietkuil
52,045.9	2,964,786.4	1,415.9	DRT022D0	100	4	52	Lower	18	0.52	0.04	Rietkuil
52,160.5	2,964,580.8	1,417.5	DRT023D0	100	65	76	Upper	14	0.76	0.65	Rietkuil

X Co-ordinate	Y Co-ordinate	Z Co-ordinate (mamsl)	Borehole Number	Composite Width (cm)	Au cmg/tonne	U ₃ O ₈ cmkg/tonne	Reef Unit	Channel Width (cm)	U ₃ O ₈ kg/tonne	Au g/tonne	Area
52,160.5	2,964,580.8	1,417.5	DRT023D0	100	0	0	Lower	0	0.00	0.00	Rietkuil
52,381.0	2,964,637.2	1,415.0	DRT024D0	Faulted			Upper	Faulted			Rietkuil
52,381.0	2,964,637.2	1,415.0	DRT024D0	100	0	10	Lower	19	0.10	0.00	Rietkuil
52,380.0	2,964,636.2	1,415.0	DRT024D1	100	68	72	Upper	40	0.72	0.68	Rietkuil
52,380.0	2,964,636.2	1,415.0	DRT024D1	100	1	8	Lower	22	0.08	0.01	Rietkuil
52,039.5	2,965,378.2	1,406.4	DRT025D0	100	172	162	Upper	84	1.62	1.72	Rietkuil
52,039.5	2,965,378.2	1,406.4	DRT025D0	100	2	3	Lower	16	0.03	0.02	Rietkuil
52,038.5	2,965,377.2	1,406.4	DRT025D1	100	94	151	Upper	80	1.51	0.94	Rietkuil
52,038.5	2,965,377.2	1,406.4	DRT025D1	100	2	9	Lower	22	0.09	0.02	Rietkuil
52,068.1	2,965,166.1	1,409.8	DRT026D0	100	50	53	Upper	73	0.53	0.50	Rietkuil
52,068.1	2,965,166.1	1,409.8	DRT026D0	100	0	0	Lower	0	0.00	0.00	Rietkuil
52,067.1	2,965,165.1	1,409.8	DRT026D1	100	54	52	Upper	70	0.52	0.54	Rietkuil
52,067.1	2,965,165.1	1,409.8	DRT026D1	100	0	0	Lower	0	0.00	0.00	Rietkuil
52,279.2	2,965,023.2	1,410.3	DRT027D0	100	63	113	Upper	33	1.13	0.63	Rietkuil
52,279.2	2,965,023.2	1,410.3	DRT027D0	100	1	11	Lower	17	0.11	0.01	Rietkuil
52,278.2	2,965,022.2	1,410.3	DRT027D1	100	50	165	Upper	33	1.65	0.50	Rietkuil
52,278.2	2,965,022.2	1,410.3	DRT027D1	100	2	8	Lower	15	0.08	0.02	Rietkuil
52,262.0	2,965,739.4	1,398.4	DRT028D0	126	37	55	Upper	126	0.44	0.30	Rietkuil
52,262.0	2,965,739.4	1,398.4	DRT028D0	100	3	6	Lower	19	0.06	0.03	Rietkuil
52,261.0	2,965,738.4	1,398.4	DRT028D1	148	51	102	Upper	148	0.68	0.34	Rietkuil
52,261.0	2,965,738.4	1,398.4	DRT028D1	100	1	8	Lower	23	0.08	0.01	Rietkuil
52,536.8	2,965,688.1	1,397.4	DRT029D0	100	94	65	Upper	87	0.65	0.94	Rietkuil
52,536.8	2,965,688.1	1,397.4	DRT029D0	100	1	12	Lower	19	0.12	0.01	Rietkuil
52,535.8	2,965,687.1	1,397.4	DRT029D1	100	121	66	Upper	83	0.66	1.21	Rietkuil
52,535.8	2,965,687.1	1,397.4	DRT029D1	100	1	0	Lower	30	0.00	0.01	Rietkuil
52,534.8	2,965,686.1	1,397.4	DRT029D2	100	111	70	Upper	95	0.70	1.11	Rietkuil
52,534.8	2,965,686.1	1,397.4	DRT029D2	100	3	28	Lower	19	0.28	0.03	Rietkuil
52,655.0	2,965,478.4	1,399.5	DRT030D0	131	83	146	Upper	131	1.11	0.64	Rietkuil
52,654.0	2,965,477.4	1,399.5	DRT030D1	117	82	213	Upper	117	1.82	0.71	Rietkuil
52,653.0	2,965,476.4	1,399.5	DRT030D2	144	234	221	Upper	144	1.54	1.63	Rietkuil
52,653.0	2,965,476.4	1,399.5	DRT030D2	100	2	33	Lower	75	0.33	0.02	Rietkuil
54,227.0	2,965,145.7	1,396.5	DRT031D0	Faulted			Upper	Faulted			Rietkuil
54,227.0	2,965,145.7	1,396.5	DRT031D0	Faulted			Lower	Faulted			Rietkuil
53,947.9	2,964,982.0	1,398.5	DRT032D0	100	30	16	Upper	51	0.16	0.30	Rietkuil
53,947.9	2,964,982.0	1,398.5	DRT032D0	100	0	0	Lower	0	0.00	0.00	Rietkuil
53,946.9	2,964,981.0	1,398.5	DRT032D1	100	17	14	Upper	24	0.14	0.17	Rietkuil
53,946.9	2,964,981.0	1,398.5	DRT032D1	100	0	0	Lower	0	0.00	0.00	Rietkuil
52,511.3	2,965,128.5	1,406.0	DRT034D0	131	1	129	Upper	131	0.99	0.01	Rietkuil
52,511.3	2,965,128.5	1,406.0	DRT034D0	100	1	11	Lower	17	0.11	0.01	Rietkuil
52,439.1	2,964,455.2	1,417.0	DRT035D0	100	3	26	Upper	13	0.26	0.03	Rietkuil
52,439.1	2,964,455.2	1,417.0	DRT035D0	100	1	6	Lower	16	0.06	0.01	Rietkuil
52,438.1	2,964,454.2	1,417.0	DRT035D1	Faulted			Upper	Faulted			Rietkuil
52,438.1	2,964,454.2	1,417.0	DRT035D1	100	1	5	Lower	20	0.05	0.01	Rietkuil
52,748.5	2,965,293.5	1,401.0	DRT036D0	135	32	62	Upper	135	0.46	0.23	Rietkuil
52,748.5	2,965,293.5	1,401.0	DRT036D0	100	2	4	Lower	17	0.04	0.02	Rietkuil
52,747.5	2,965,292.5	1,401.0	DRT036D1	142	36	59	Upper	142	0.42	0.25	Rietkuil
52,747.5	2,965,292.5	1,401.0	DRT036D1	100	1	14	Lower	17	0.14	0.01	Rietkuil

X Co-ordinate	Y Co-ordinate	Z Co-ordinate (mamsl)	Borehole Number	Composite Width (cm)	Au cmg/tonne	U ₃ O ₈ cmkg/tonne	Reef Unit	Channel Width (cm)	U ₃ O ₈ kg/tonne	Au g/tonne	Area
52,746.5	2,965,291.5	1,401.0	DRT036D2	142	59	66	Upper	142	0.46	0.41	Rietkuil
52,746.5	2,965,291.5	1,401.0	DRT036D2	100	1	6	Lower	24	0.06	0.01	Rietkuil
52,885.8	2,964,912.9	1,405.7	DRT037D0	100	85	42	Upper	66	0.42	0.85	Rietkuil
52,885.8	2,964,912.9	1,405.7	DRT037D0	100	1	2	Lower	22	0.02	0.01	Rietkuil
52,884.8	2,964,911.9	1,405.7	DRT037D1	100	93	37	Upper	64	0.37	0.93	Rietkuil
52,884.8	2,964,911.9	1,405.7	DRT037D1	100	1	5	Lower	18	0.05	0.01	Rietkuil
53,719.2	2,964,592.5	1,403.8	DRT038D0	100	24	20	Upper	21	0.20	0.24	Rietkuil
53,719.2	2,964,592.5	1,403.8	DRT038D0	100	0	0	Lower	0	0.00	0.00	Rietkuil
53,718.2	2,964,591.5	1,403.8	DRT038D1	100	16	9	Upper	16	0.09	0.16	Rietkuil
53,718.2	2,964,591.5	1,403.8	DRT038D1	100	0	0	Lower	0	0.00	0.00	Rietkuil
52,704.2	2,964,680.1	1,411.0	DRT039D0	100	143	42	Upper	80	0.42	1.43	Rietkuil
52,704.2	2,964,680.1	1,411.0	DRT039D0	100	9	6	Lower	18	0.06	0.09	Rietkuil
52,703.2	2,964,679.1	1,411.0	DRT039D1	100	262	73	Upper	73	0.73	2.62	Rietkuil
52,703.2	2,964,679.1	1,411.0	DRT039D1	100	1	7	Lower	16	0.07	0.01	Rietkuil
52,479.4	2,964,252.7	1,419.2	DRT040D0	100	190	152	Upper	25	1.52	1.90	Rietkuil
52,479.4	2,964,252.7	1,419.2	DRT040D0	100	2	2	Lower	18	0.02	0.02	Rietkuil
52,478.4	2,964,251.7	1,419.2	DRT040D1	100	119	8	Upper	16	0.08	1.19	Rietkuil
52,478.4	2,964,251.7	1,419.2	DRT040D1	100	1	1	Lower	26	0.01	0.01	Rietkuil
52,203.7	2,964,386.9	1,419.3	DRT041D0	100	8	28	Upper	51	0.28	0.08	Rietkuil
52,203.7	2,964,386.9	1,419.3	DRT041D0	100	1	1	Lower	31	0.01	0.01	Rietkuil
52,203.2	2,964,184.6	1,419.6	DRT042D0	110	0	0	Upper	0	0.00	0.00	Rietkuil
52,203.2	2,964,184.6	1,419.6	DRT042D0	100	0	0	Lower	0	0.00	0.00	Rietkuil
52,456.5	2,963,996.2	1,422.2	DRT043D0	100	211	232	Upper	17	2.32	2.11	Rietkuil
52,456.5	2,963,996.2	1,422.2	DRT043D0	100	0	0	Lower	0	0.00	0.00	Rietkuil
52,455.5	2,963,995.2	1,422.2	DRT043D1	100	254	181	Upper	15	1.81	2.54	Rietkuil
52,455.5	2,963,995.2	1,422.2	DRT043D1	100	0	0	Lower	0	0.00	0.00	Rietkuil
54,110.4	2,964,730.2	1,405.8	DRT044D0	Faulted			Upper	Faulted			Rietkuil
54,110.4	2,964,730.2	1,405.8	DRT044D0	Faulted			Lower	Faulted			Rietkuil
54,418.0	2,965,417.2	1,390.2	DRT045D0	100	25	12	Upper	32	0.12	0.25	Rietkuil
54,418.0	2,965,417.2	1,390.2	DRT045D0	100	16	2	Lower	18	0.02	0.16	Rietkuil
54,417.0	2,965,416.2	1,390.2	DRT045D1	100	22	17	Upper	37	0.17	0.22	Rietkuil
54,417.0	2,965,416.2	1,390.2	DRT045D1	100	6	2	Lower	18	0.02	0.06	Rietkuil
53,184.4	2,964,718.1	1,404.5	DRT046D0	100	0	0	Upper	0	0.00	0.00	Rietkuil
53,184.4	2,964,718.1	1,404.5	DRT046D0	100	0	0	Lower	0	0.00	0.00	Rietkuil
53,368.1	2,964,954.9	1,399.3	DRT047D0	100	0	0	Upper	0	0.00	0.00	Rietkuil
53,368.1	2,964,954.9	1,399.3	DRT047D0	100	0	0	Lower	0	0.00	0.00	Rietkuil
52,416.2	2,965,885.8	1,395.9	DRT048D0	160	166	32	Upper	183	0.20	1.04	Rietkuil
52,416.2	2,965,885.8	1,395.9	DRT048D0	100	0	0	Lower	0	0.00	0.00	Rietkuil
52,416.2	2,965,884.8	1,395.9	DRT048D1	160	83	60	Upper	175	0.38	0.52	Rietkuil
52,416.2	2,965,884.8	1,395.9	DRT048D1	100	0	0	Lower	0	0.00	0.00	Rietkuil
50,738.3	2,966,159.1	1,392.8	DRT049D0	100	55	51	Upper	53	0.51	0.55	Rietkuil
50,738.3	2,966,159.1	1,392.8	DRT049D0	100	12	2	Lower	29	0.02	0.12	Rietkuil
50,737.3	2,966,158.1	1,392.8	DRT049D1	100	18	57	Upper	65	0.57	0.18	Rietkuil
50,737.3	2,966,158.1	1,392.8	DRT049D1	100	7	8	Lower	27	0.08	0.07	Rietkuil
51,042.7	2,965,984.3	1,396.8	DRT050D0	100	25	195	Upper	51	1.95	0.25	Rietkuil
51,042.7	2,965,984.3	1,396.8	DRT050D0	100	1	21	Lower	24	0.21	0.01	Rietkuil
51,042.7	2,965,983.3	1,396.8	DRT050D1	100	37	167	Upper	51	1.67	0.37	Rietkuil

X Co-ordinate	Y Co-ordinate	Z Co-ordinate (mamsl)	Borehole Number	Composite Width (cm)	Au cmg/tonne	U ₃ O ₈ cmkg/tonne	Reef Unit	Channel Width (cm)	U ₃ O ₈ kg/tonne	Au g/tonne	Area
51,042.7	2,965,983.3	1,396.8	DRT050D1	100	4	38	Lower	18	0.38	0.04	Rietkuil
51,349.9	2,966,227.9	1,394.8	DRT051D1	126	192	86	Upper	126	0.68	1.53	Rietkuil
51,349.9	2,966,227.9	1,394.8	DRT051D1	100	0	0	Lower	0	0.00	0.00	Rietkuil
51,348.9	2,966,227.9	1,394.8	DRT051D2	160	139	78	Upper	188	0.48	0.87	Rietkuil
51,348.9	2,966,227.9	1,394.8	DRT051D2	100	0	0	Lower	0	0.00	0.00	Rietkuil
50,958.2	2,966,265.8	1,392.9	DRT052D0	Faulted			Upper	Faulted			Rietkuil
50,958.2	2,966,265.8	1,392.9	DRT052D0	Faulted			Lower	Faulted			Rietkuil
50,813.5	2,965,831.0	1,396.2	DRT053D0	100	27	82	Upper	85	0.82	0.27	Rietkuil
50,813.5	2,965,831.0	1,396.2	DRT053D0	100	5	5	Lower	19	0.05	0.05	Rietkuil
50,487.8	2,966,001.9	1,391.9	DRT054D0	100	3	50	Upper	61	0.50	0.03	Rietkuil
50,487.8	2,966,001.9	1,391.9	DRT054D0	100	1	1	Lower	84	0.01	0.01	Rietkuil
50,487.8	2,966,000.9	1,391.9	DRT054D1	100	47	153	Upper	88	1.53	0.47	Rietkuil
50,487.8	2,966,000.9	1,391.9	DRT054D1	100	1	1	Lower	69	0.01	0.01	Rietkuil
50,668.4	2,966,464.0	1,389.2	DRT055D0	100	0	0	Upper	0	0.00	0.00	Rietkuil
50,668.4	2,966,464.0	1,389.2	DRT055D0	100	0	0	Lower	0	0.00	0.00	Rietkuil
50,856.1	2,966,611.7	1,388.2	DRT056D0	160	117	58	Upper	160	0.37	0.73	Rietkuil
50,856.1	2,966,611.7	1,388.2	DRT056D0	100	367	141	Lower	20	1.41	3.67	Rietkuil
50,856.1	2,966,610.7	1,388.2	DRT056D1	147	96	45	Upper	147	0.31	0.66	Rietkuil
50,856.1	2,966,610.7	1,388.2	DRT056D1	100	2	3	Lower	19	0.03	0.02	Rietkuil
51,170.3	2,966,816.2	1,386.0	DRT057D0	100	35	29	Upper	96	0.29	0.35	Rietkuil
51,170.3	2,966,816.2	1,386.0	DRT057D0	100	42	9	Lower	18	0.09	0.42	Rietkuil
51,169.3	2,966,815.2	1,386.0	DRT057D1	114	41	24	Upper	114	0.21	0.35	Rietkuil
51,169.3	2,966,815.2	1,386.0	DRT057D1	100	24	13	Lower	18	0.13	0.24	Rietkuil
50,420.2	2,966,432.8	1,386.0	DRT058D0	103	200	80	Upper	103	0.77	1.94	Rietkuil
50,420.2	2,966,432.8	1,386.0	DRT058D0	100	0	0	Lower	0	0.00	0.00	Rietkuil
50,419.2	2,966,432.8	1,386.0	DRT058D1	160	133	60	Upper	164	0.38	0.83	Rietkuil
50,419.2	2,966,432.8	1,386.0	DRT058D1	100	0	0	Lower	0	0.00	0.00	Rietkuil
51,509.9	2,966,024.4	1,397.3	DRT059D0	146	87	150	Upper	146	1.03	0.60	Rietkuil
51,509.9	2,966,024.4	1,397.3	DRT059D0	100	1	1	Lower	17	0.01	0.01	Rietkuil
51,509.9	2,966,023.4	1,397.3	DRT059D1	100	96	38	Upper	69	0.38	0.96	Rietkuil
51,509.9	2,966,023.4	1,397.3	DRT059D1	100	1	0	Lower	20	0.00	0.01	Rietkuil
51,295.6	2,966,424.9	1,391.3	DRT060D0	Faulted			Upper	Faulted			Rietkuil
51,295.6	2,966,424.9	1,391.3	DRT060D0	Faulted			Lower	Faulted			Rietkuil
50,303.4	2,966,124.1	1,389.2	DRT061D0	100	172	202	Upper	76	2.02	1.72	Rietkuil
50,303.4	2,966,124.1	1,389.2	DRT061D0	100	1	2	Lower	82	0.02	0.01	Rietkuil
50,303.4	2,966,123.1	1,389.2	DRT061D1	100	89	218	Upper	82	2.18	0.89	Rietkuil
50,303.4	2,966,123.1	1,389.2	DRT061D1	100	1	2	Lower	74	0.02	0.01	Rietkuil
50,543.1	2,965,275.1	1,397.7	DRT062D0	100	0	0	Upper	0	0.00	0.00	Rietkuil
50,543.1	2,965,275.1	1,397.7	DRT062D0	100	0	0	Lower	100	0.00	0.00	Rietkuil
50,562.8	2,965,557.2	1,395.1	DRT063D0	100	0	0	Upper	0	0.00	0.00	Rietkuil
50,562.8	2,965,557.2	1,395.1	DRT063D0	100	0	0	Lower	0	0.00	0.00	Rietkuil
50,796.5	2,965,507.0	1,398.4	DRT064D0	100	19	2	Upper	17	0.02	0.19	Rietkuil
50,796.5	2,965,507.0	1,398.4	DRT064D0	100	0	0	Lower	0	0.00	0.00	Rietkuil
50,264.4	2,965,777.2	1,392.7	DRT065D0	100	0	0	Upper	0	0.00	0.00	Rietkuil
50,264.4	2,965,777.2	1,392.7	DRT065D0	100	0	0	Lower	0	0.00	0.00	Rietkuil
50,134.9	2,965,337.2	1,400.6	DRT066D0	100	0	0	Upper	0	0.00	0.00	Rietkuil
50,134.9	2,965,337.2	1,400.6	DRT066D0	100	0	0	Lower	0	0.00	0.00	Rietkuil

X Co-ordinate	Y Co-ordinate	Z Co-ordinate (mamsl)	Borehole Number	Composite Width (cm)	Au cmg/tonne	U ₃ O ₈ cmkg/tonne	Reef Unit	Channel Width (cm)	U ₃ O ₈ kg/tonne	Au g/tonne	Area
50,237.6	2,965,144.2	1,397.4	DRT067D0	100	0	0	Upper	0	0.00	0.00	Rietkuil
50,237.6	2,965,144.2	1,397.4	DRT067D0	100	0	0	Lower	0	0.00	0.00	Rietkuil
50,010.6	2,965,033.3	1,405.6	DRT068D0	100	0	0	Upper	0	0.00	0.00	Rietkuil
50,010.6	2,965,033.3	1,405.6	DRT068D0	100	0	0	Lower	0	0.00	0.00	Rietkuil
52,937.1	2,965,672.9	1,394.3	DRT069D0	100	100	81	Upper	82	0.81	1.00	Rietkuil
52,937.1	2,965,672.9	1,394.3	DRT069D0	100	1	2	Lower	20	0.02	0.01	Rietkuil
52,937.1	2,965,671.9	1,394.3	DRT069D1	100	146	108	Upper	95	1.08	1.46	Rietkuil
52,937.1	2,965,671.9	1,394.3	DRT069D1	100	14	8	Lower	41	0.08	0.14	Rietkuil
53,180.0	2,965,734.3	1,388.2	DRT070D0	100	88	135	Upper	100	1.35	0.88	Rietkuil
53,180.0	2,965,734.3	1,388.2	DRT070D0	100	1	8	Lower	52	0.08	0.01	Rietkuil
53,180.0	2,965,733.3	1,388.2	DRT070D1	100	106	149	Upper	95	1.49	1.06	Rietkuil
53,180.0	2,965,733.3	1,388.2	DRT070D1	100	6	16	Lower	39	0.16	0.06	Rietkuil
53,179.0	2,965,733.3	1,388.2	DRT070D2	100	73	140	Upper	87	1.40	0.73	Rietkuil
53,179.0	2,965,733.3	1,388.2	DRT070D2	100	1	6	Lower	45	0.06	0.01	Rietkuil
53,574.4	2,965,883.4	1,387.2	DRT071D0	Faulted			Upper	Faulted			Rietkuil
53,574.4	2,965,883.4	1,387.2	DRT071D0	Faulted			Lower	Faulted			Rietkuil
53,843.4	2,966,085.3	1,389.6	DRT072D0	Faulted			Upper	Faulted			Rietkuil
53,843.4	2,966,085.3	1,389.6	DRT072D0	Faulted			Lower	Faulted			Rietkuil
54,019.6	2,966,594.2	1,392.2	DRT073D0	141	119	178	Upper	141	1.26	0.84	Rietkuil
54,019.6	2,966,594.2	1,392.2	DRT073D0	100	2	1	Lower	19	0.01	0.02	Rietkuil
54,018.6	2,966,594.2	1,392.2	DRT073D1	145	137	181	Upper	145	1.25	0.95	Rietkuil
54,018.6	2,966,594.2	1,392.2	DRT073D1	100	6	2	Lower	18	0.02	0.06	Rietkuil
54,017.6	2,966,594.2	1,392.2	DRT073D2	137	155	178	Upper	137	1.30	1.13	Rietkuil
54,017.6	2,966,594.2	1,392.2	DRT073D2	100	1	8	Lower	20	0.08	0.01	Rietkuil
54,689.7	2,966,116.8	1,394.6	DRT074D0	Faulted			Upper	Faulted			Rietkuil
54,689.7	2,966,116.8	1,394.6	DRT074D0	Faulted			Lower	Faulted			Rietkuil
54,985.5	2,966,481.0	1,400.8	DRT075D0	Faulted			Upper	Faulted			Rietkuil
54,985.5	2,966,481.0	1,400.8	DRT075D0	Faulted			Lower	Faulted			Rietkuil
51,677.0	2,966,704.0	1,386.4	DRT076D0	151	79	57	Upper	151	0.38	0.52	Rietkuil
51,677.0	2,966,704.0	1,386.4	DRT076D0	100	5	6	Lower	20	0.06	0.05	Rietkuil
51,677.0	2,966,703.0	1,386.4	DRT076D1	160	79	47	Upper	165	0.29	0.49	Rietkuil
51,677.0	2,966,703.0	1,386.4	DRT076D1	100	1	2	Lower	18	0.02	0.01	Rietkuil
51,023.8	2,966,137.2	1,394.8	DRT077D0	Faulted			Upper	Faulted			Rietkuil
51,023.8	2,966,137.2	1,394.8	DRT077D0	100	1	2	Lower	18	0.02	0.01	Rietkuil
50,932.1	2,966,385.4	1,391.4	DRT078D0	107	1	105	Upper	107	0.98	0.01	Rietkuil
50,932.1	2,966,385.4	1,391.4	DRT078D0	100	98	5	Lower	24	0.05	0.98	Rietkuil
50,931.1	2,966,385.4	1,391.4	DRT078D1	123	101	101	Upper	123	0.82	0.82	Rietkuil
50,931.1	2,966,385.4	1,391.4	DRT078D1	100	65	4	Lower	18	0.04	0.65	Rietkuil
51,259.7	2,966,564.9	1,389.1	DRT079D0	160	133	127	Upper	237	0.79	0.83	Rietkuil
51,259.7	2,966,564.9	1,389.1	DRT079D0	100	1	0	Lower	19	0.00	0.01	Rietkuil
51,258.7	2,966,564.9	1,389.1	DRT079D1	160	88	117	Upper	236	0.73	0.55	Rietkuil
51,258.7	2,966,564.9	1,389.1	DRT079D1	100	1	0	Lower	18	0.00	0.01	Rietkuil
52,973.0	2,965,827.7	1,390.0	DRT091D0	100	22	27	Upper	68	0.27	0.22	Rietkuil
52,973.0	2,965,827.7	1,390.0	DRT091D0	100	1	76	Lower	16	0.76	0.01	Rietkuil
52,854.8	2,966,361.8	1,383.1	DRT092D0	160	67	55	Upper	185	0.34	0.42	Rietkuil
52,854.8	2,966,361.8	1,383.1	DRT092D0	100	4	81	Lower	11	0.81	0.04	Rietkuil
52,853.8	2,966,361.8	1,383.1	DRT092D1	160	45	64	Upper	188	0.40	0.28	Rietkuil

X Co-ordinate	Y Co-ordinate	Z Co-ordinate (mamsl)	Borehole Number	Composite Width (cm)	Au cmg/tonne	U ₃ O ₈ cmkg/tonne	Reef Unit	Channel Width (cm)	U ₃ O ₈ kg/tonne	Au g/tonne	Area
52,853.8	2,966,361.8	1,383.1	DRT092D1	100	16	86	Lower	9	0.86	0.16	Rietkuil
52,852.8	2,966,361.8	1,383.1	DRT092D2	160	81	87	Upper	210	0.55	0.51	Rietkuil
52,852.8	2,966,361.8	1,383.1	DRT092D2	100	47	124	Lower	28	1.24	0.47	Rietkuil
52,177.9	2,967,036.7	1,378.5	DRT096D0	121	44	44	Upper	121	0.36	0.36	Rietkuil
52,177.9	2,967,036.7	1,378.5	DRT096D0	100	11	4	Lower	26	0.04	0.11	Rietkuil
52,176.9	2,967,036.7	1,378.5	DRT096D1	110	42	45	Upper	110	0.41	0.39	Rietkuil
52,176.9	2,967,036.7	1,378.5	DRT096D1	100	84	13	Lower	24	0.13	0.84	Rietkuil
52,175.9	2,967,036.7	1,378.5	DRT096D2	102	42	28	Upper	102	0.27	0.42	Rietkuil
52,175.9	2,967,036.7	1,378.5	DRT096D2	100	69	29	Lower	17	0.29	0.69	Rietkuil
51,767.0	2,966,741.8	1,385.2	DRT097D0	114	39	42	Upper	111	0.37	0.34	Rietkuil
51,767.0	2,966,741.8	1,385.2	DRT097D0	100	1	0	Lower	10	0.00	0.01	Rietkuil
51,766.0	2,966,741.8	1,385.2	DRT097D1	118	27	29	Upper	118	0.24	0.23	Rietkuil
51,766.0	2,966,741.8	1,385.2	DRT097D1	100	9	1	Lower	20	0.01	0.09	Rietkuil
51,765.0	2,966,741.8	1,385.2	DRT097D2	142	29	30	Upper	142	0.21	0.20	Rietkuil
51,765.0	2,966,741.8	1,385.2	DRT097D2	100	1	1	Lower	34	0.01	0.01	Rietkuil
50,287.4	2,966,943.5	1,382.2	DRT103D0	111	102	93	Upper	111	0.84	0.92	Rietkuil
50,287.4	2,966,943.5	1,382.2	DRT103D0	100	0	0	Lower	0	0.00	0.00	Rietkuil
52,486.4	2,966,075.8	1,392.7	DRT109D0	160	144	101	Upper	166	0.63	0.90	Rietkuil
52,486.4	2,966,075.8	1,392.7	DRT109D0	100	25	3	Lower	31	0.03	0.25	Rietkuil
53,165.3	2,966,091.5	1,384.3	DRT111D0	100	30	42	Upper	40	0.42	0.30	Rietkuil
53,165.3	2,966,091.5	1,384.3	DRT111D0	100	26	25	Lower	23	0.25	0.26	Rietkuil
53,119.2	2,965,327.2	1,397.4	DRT112D0	160	2	27	Upper	164	0.17	0.01	Rietkuil
53,119.2	2,965,327.2	1,397.4	DRT112D0	100	2	8	Lower	29	0.08	0.02	Rietkuil
53,724.1	2,966,200.9	1,388.7	DRT113D0	160	2	15	Upper	269	0.10	0.01	Rietkuil
53,724.1	2,966,200.9	1,388.7	DRT113D0	100	120	22	Lower	25	0.22	1.20	Rietkuil
52,162.2	2,964,958.9	1,412.5	TRX001D0	100	19	34	Upper	42	0.34	0.19	Rietkuil
52,162.2	2,964,958.9	1,412.5	TRX001D0	100	0	0	Lower	0	0.00	0.00	Rietkuil
52,445.8	2,965,357.6	1,402.9	TRX002D0	100	306	192	Upper	80	1.92	3.06	Rietkuil
52,445.8	2,965,357.6	1,402.9	TRX002D0	100	0	0	Lower	0	0.00	0.00	Rietkuil
52,444.8	2,965,356.6	1,402.9	TRX002D0a	100	138	176	Upper	92	1.76	1.38	Rietkuil
52,444.8	2,965,356.6	1,402.9	TRX002D0a	100	0	0	Lower	0	0.00	0.00	Rietkuil
52,391.8	2,965,529.1	1,400.7	TRX003D0	160	141	141	Upper	271	0.88	0.88	Rietkuil
52,391.8	2,965,529.1	1,400.7	TRX003D0	100	24	96	Lower	16	0.96	0.24	Rietkuil
52,390.8	2,965,528.1	1,400.7	TRX003D1	160	152	126	Upper	249	0.79	0.95	Rietkuil
52,390.8	2,965,528.1	1,400.7	TRX003D1	100	112	66	Lower	32	0.66	1.12	Rietkuil
52,079.0	2,965,893.3	1,397.5	TRX004D0	160	160	79	Upper	213	0.50	1.00	Rietkuil
52,079.0	2,965,893.3	1,397.5	TRX004D0	100	0	0	Lower	0	0.00	0.00	Rietkuil
52,077.0	2,965,583.2	1,402.0	TRX005D0	100	283	267	Upper	92	2.67	2.83	Rietkuil
52,077.0	2,965,583.2	1,402.0	TRX005D0	100	31	134	Lower	36	1.34	0.31	Rietkuil
52,207.4	2,965,258.9	1,406.7	TRX006D0	118	195	80	Upper	118	0.68	1.66	Rietkuil
52,207.4	2,965,258.9	1,406.7	TRX006D0	100	4	8	Lower	18	0.08	0.04	Rietkuil
52,206.4	2,965,257.9	1,406.7	TRX006D1	125	409	94	Upper	125	0.75	3.27	Rietkuil
52,206.4	2,965,257.9	1,406.7	TRX006D1	100	1	15	Lower	17	0.15	0.01	Rietkuil

Notes:

(1) While assays are undertaken on each sample, the results are composited to represent a single mineralized length and grade, representing each reef intersection over a minimum of 100 cm.

(2) Nominal dip correction factors of have been applied for individual boreholes.

Mr. M.H.G. Heyns, Pr.Sci.Nat. (SACNASP), MSAIMM, MGSSA, Vice President, Geology and Exploration, srx Uranium One Inc. and Dr. R.A. Stewart, Pr.Sci.Nat. (SACNASP), MGSSA, Regional Exploration Manager, srx Uranium One Inc., are the qualified persons responsible for the Dominion drilling program and have verified the data in the table above. Exploration data is acquired by the Corporation and its consultants under strict quality assurance and quality control protocols. Half-core assay samples are collected by appropriately qualified personnel. Samples are prepared at an onsite preparation facility managed by Superlabs Ltd. and are assayed at the Set Point Laboratory located in Johannesburg, South Africa, which is accredited under SANAS and ISO/IEC 17025. Gold assays are performed using conventional fire assay procedures and uranium assays are performed using x-ray fluorescence spectrometry on a pressed powder pellet or a borate fusion disc. Quality control procedures follow industry standard protocols and include the use of blind control samples.

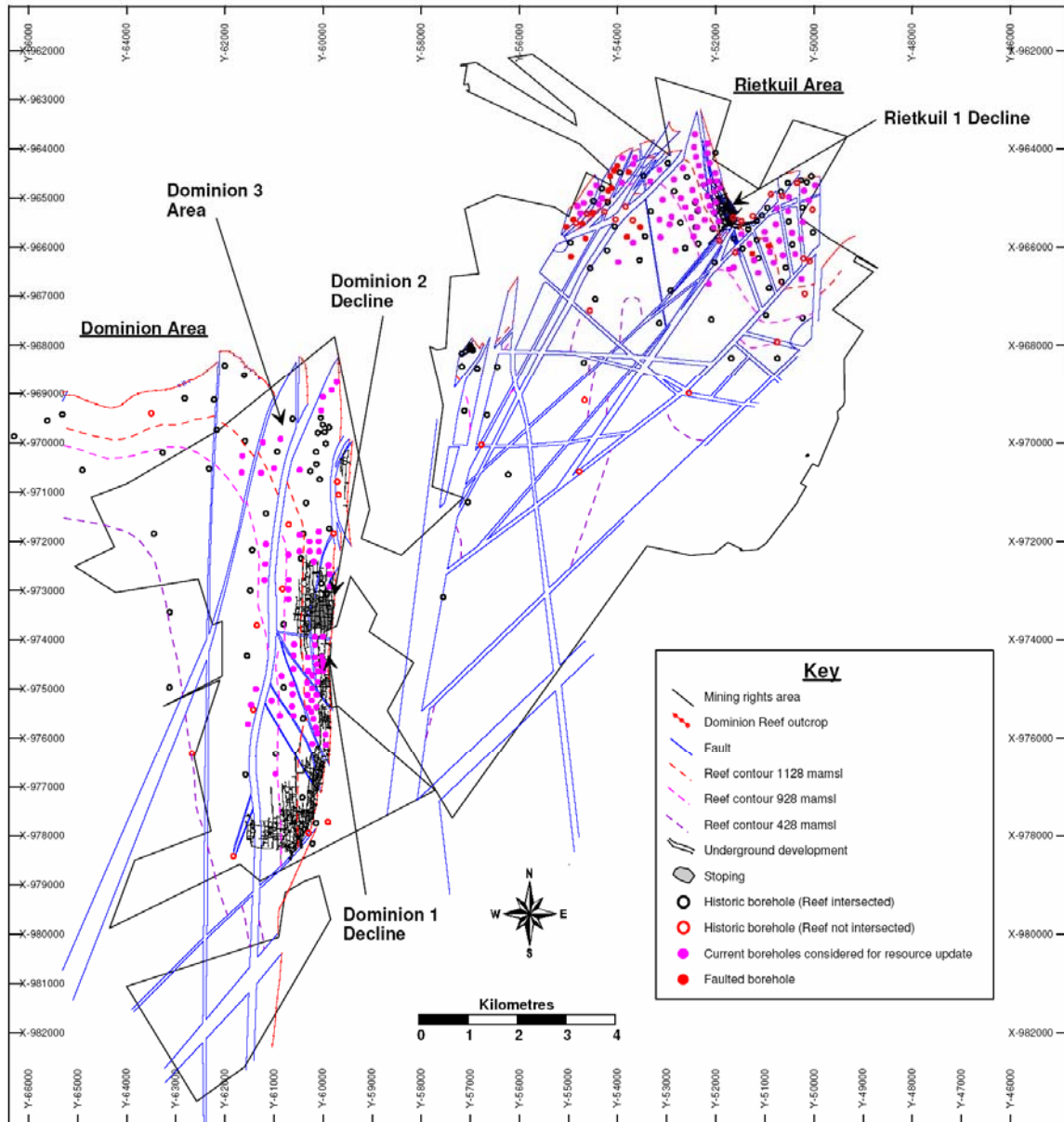


Figure 1: Locality of historic and current boreholes considered for the January 2007 resource update.

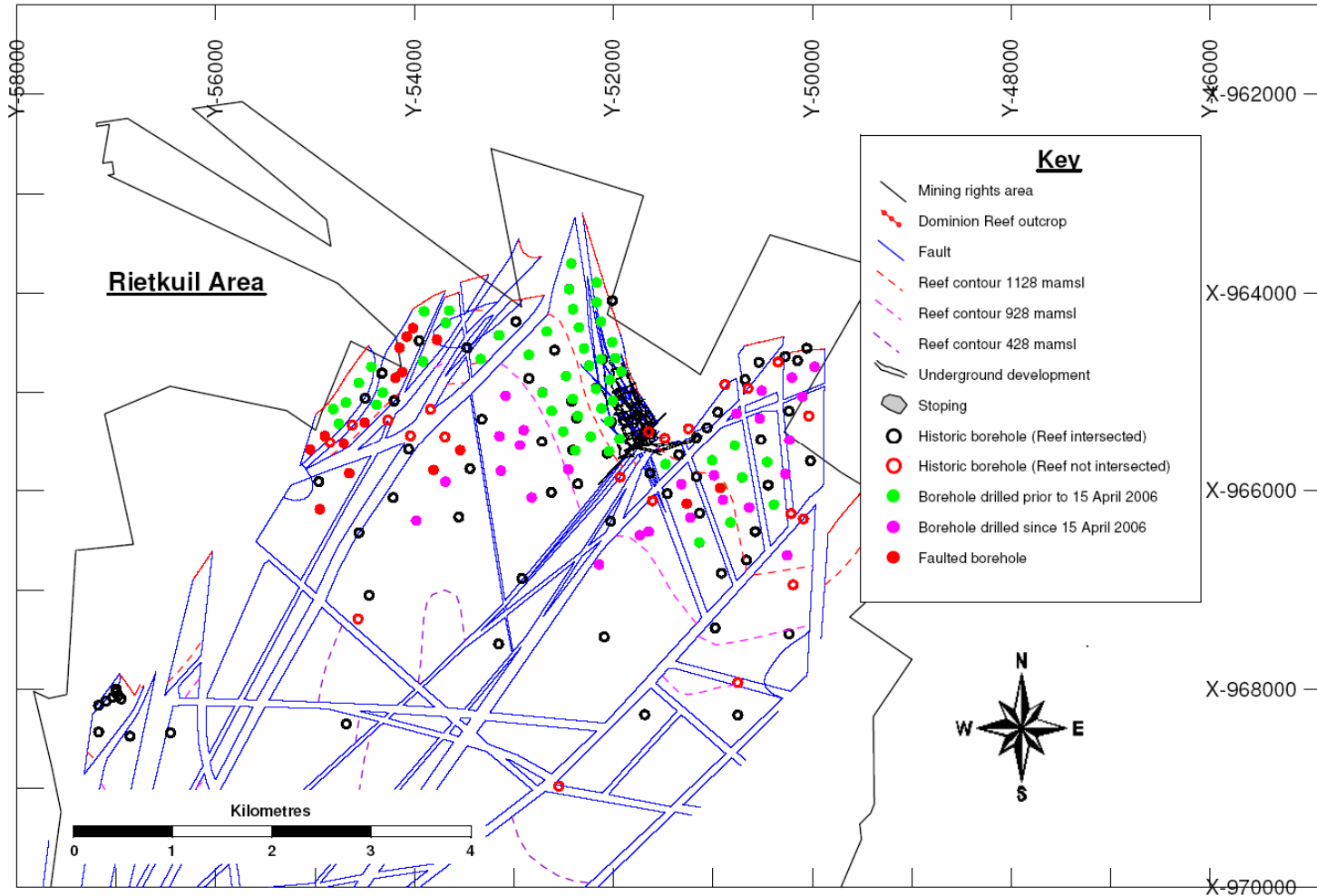


Figure 2: Locality of the boreholes drilled in the Rietkuil area. Boreholes drilled prior to 15 April 2006 (considered for the June 2006 resource) are indicated in green and additional boreholes considered for the current resource update (January 2007) are indicated in purple.

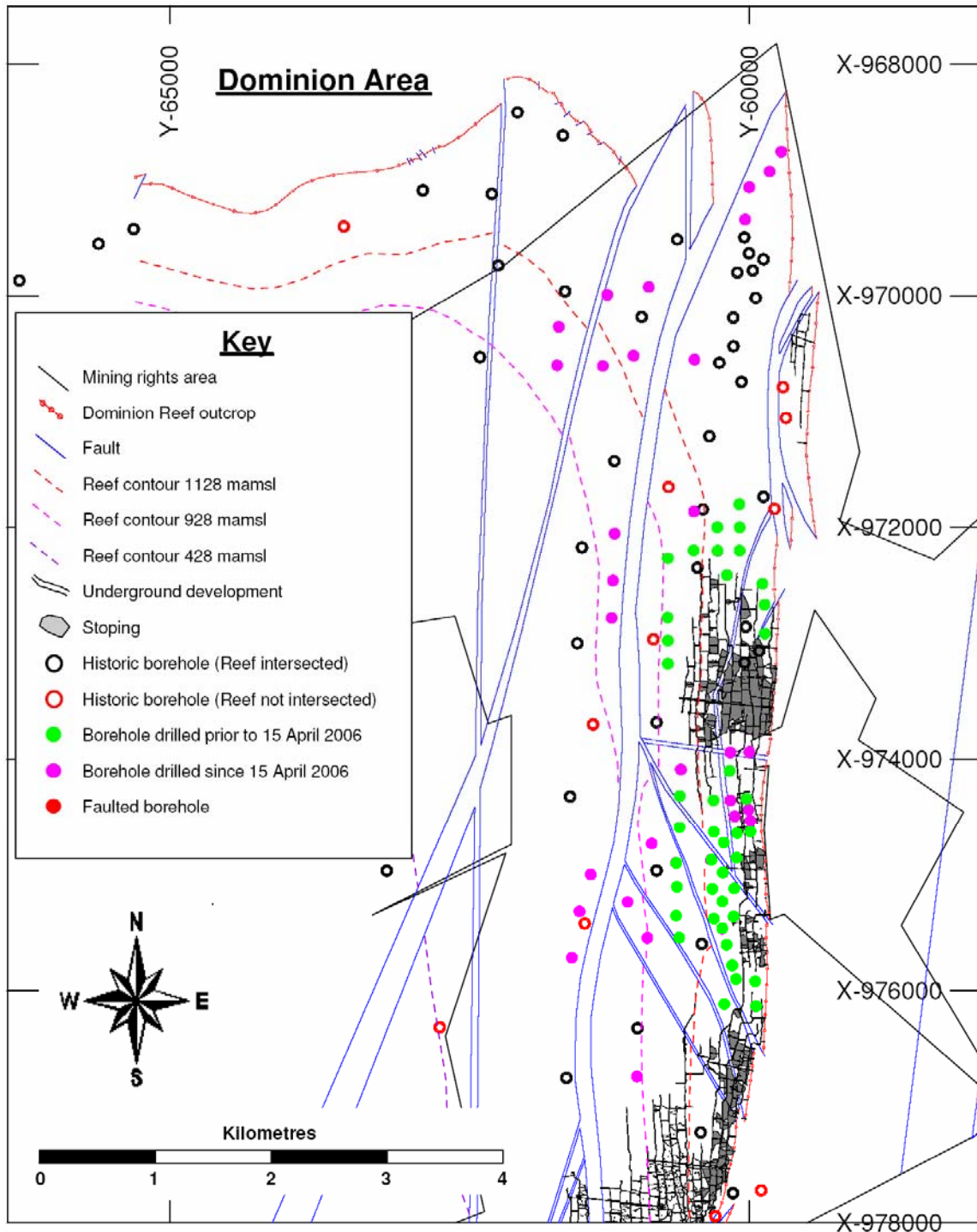


Figure 3: Locality of the boreholes drilled in the Dominion area. Boreholes drilled prior to 15 April 2006 (considered for the June 2006 resource) are indicated in green and additional boreholes considered for the current resource update (January 2007) are indicated in purple.

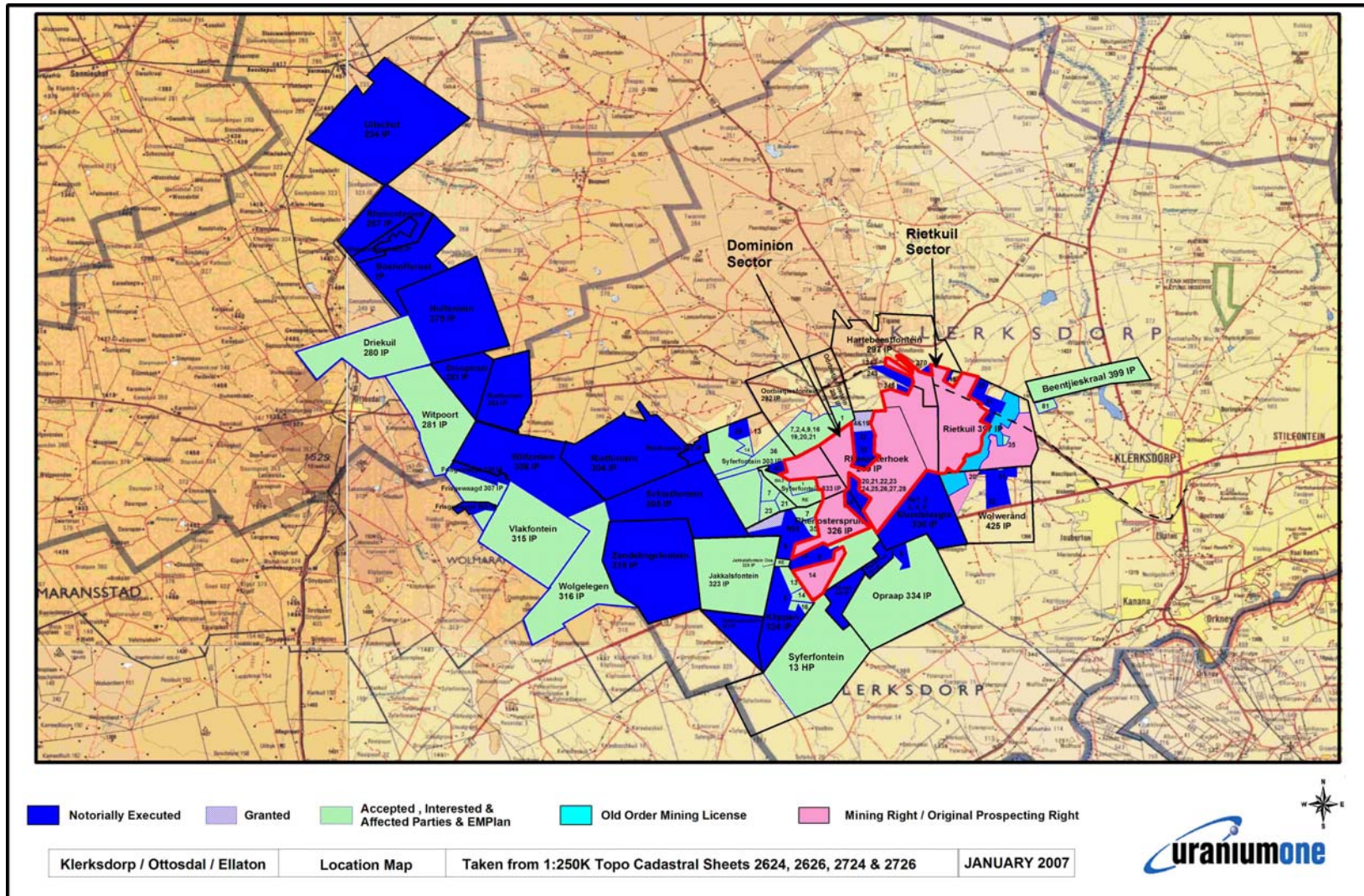


Figure 4: Map indicating the additional areas for which prospecting rights have been applied for and obtained (The pink areas with a red border represent the current Rietkuil and Dominion Sectors).