

sxr Uranium One Inc.
26 Wellington Street East, Suite 820
Toronto, Ontario M5E 1 S2

Dominion Project - Drill Program Results – May 2005 to 15 April 2006

X Co-ordinate	Y Co-ordinate	Z Co-ordinate (mamsl)	Borehole Number	Composite Width (cm) ⁽¹⁾	Au cmg/ton	U ₃ O ₈ cmkg/ton	Reef Unit	Channel Width (cm) ⁽²⁾	U ₃ O ₈ kg/ton	Au g/ton	Area
-60,206	-2,974,393	1,434	DDR007D0	160	132.06	106.72	Upper	259	0.67	0.83	Dominion
-60,206	-2,974,393	1,434	DDR007D0	158	37.79	31.13	Lower	158	0.20	0.24	Dominion
-60,206	-2,974,393	1,434	DDR007D1	160	155.58	155.16	Upper	261	0.96	0.97	Dominion
-60,206	-2,974,393	1,434	DDR007D1	160	53.88	61.85	Lower	171	0.39	0.34	Dominion
-60,060	-2,974,635	1,432	DDR008D0	160	363.60	181.11	Upper	193	1.13	2.27	Dominion
-60,060	-2,974,635	1,432	DDR008D0	160	243.99	64.79	Lower	248	0.40	1.52	Dominion
-60,346	-2,974,646	1,433	DDR009D0	160	3.61	24.05	Upper	253	0.15	0.02	Dominion
-60,346	-2,974,646	1,433	DDR009D0	160	161.78	61.79	Lower	205	0.39	1.01	Dominion
-60,346	-2,974,646	1,433	DDR009D1	160	5.82	25.52	Upper	259	0.16	0.04	Dominion
-60,346	-2,974,646	1,433	DDR009D1	140	144.89	57.68	Lower	228	0.41	0.91	Dominion
-60,342	-2,974,924	1,431	DDR010D0	160	35.34	34.40	Upper	182	0.22	0.22	Dominion
-60,342	-2,974,924	1,431	DDR010D0	135	47.15	44.15	Lower	135	0.33	0.35	Dominion
-60,342	-2,974,924	1,431	DDR010D1	160	38.91	37.44	Upper	184	0.23	0.24	Dominion
-60,342	-2,974,924	1,431	DDR010D1	Faulted			Lower	Faulted			Dominion
-60,141	-2,974,933	1,431	DDR011AD0	160	71.04	52.87	Upper	167	0.33	0.44	Dominion
-60,141	-2,974,933	1,431	DDR011AD0	Faulted			Lower	Faulted			Dominion
-60,141	-2,974,933	1,431	DDR011AD1	160	84.20	52.93	Upper	166	0.33	0.53	Dominion
-60,141	-2,974,933	1,431	DDR011AD1	100	18.70	12.51	Lower	76	0.13	0.19	Dominion
-60,026	-2,974,921	1,431	DDR012D0	119	71.86	37.91	Upper	119	0.32	0.60	Dominion
-60,026	-2,974,921	1,431	DDR012D0	160	442.55	13.80	Lower	392	0.09	2.77	Dominion
-60,146	-2,975,150	1,430	DDR013D0	160	39.54	33.01	Upper	207	0.21	0.25	Dominion
-60,146	-2,975,150	1,430	DDR013D0	160	21.78	39.23	Lower	276	0.25	0.14	Dominion
-60,146	-2,975,150	1,430	DDR013D1	160	56.56	49.58	Upper	199	0.31	0.35	Dominion
-60,146	-2,975,150	1,430	DDR013D1	160	7.92	6.26	Lower	317	0.04	0.05	Dominion
-60,364	-2,975,167	1,429	DDR014D0	Faulted			Upper	Faulted			Dominion
-60,364	-2,975,167	1,429	DDR014D0	100	230.13	7.86	Lower	36	0.08	2.30	Dominion
-60,364	-2,975,167	1,429	DDR014D1	Faulted			Upper	Faulted			Dominion
-60,364	-2,975,167	1,429	DDR014D1	100	158.50	8.24	Lower	35	0.08	1.59	Dominion
-60,355	-2,975,415	1,428	DDR015D0	160	42.13	59.19	Upper	235	0.37	0.26	Dominion
-60,355	-2,975,415	1,428	DDR015D0	100	0.00	0.00	Lower	0	0.00	0.00	Dominion
-60,355	-2,975,415	1,428	DDR015D1	160	33.32	56.91	Upper	232	0.36	0.21	Dominion
-60,355	-2,975,415	1,428	DDR015D1	100	0.00	0.00	Lower	0	0.00	0.00	Dominion
-60,166	-2,975,412	1,429	DDR016D0	138	28.23	46.07	Upper	138	0.33	0.21	Dominion
-60,166	-2,975,412	1,429	DDR016D0	100	239.39	6.42	Lower	91	0.06	2.39	Dominion
-60,166	-2,975,412	1,429	DDR016D1	150	39.58	42.21	Upper	150	0.28	0.26	Dominion
-60,166	-2,975,412	1,429	DDR016D3	160	34.01	47.03	Upper	166	0.29	0.21	Dominion
-60,166	-2,975,412	1,429	DDR016D3	100	171.96	7.48	Lower	89	0.07	1.72	Dominion
-60,341	-2,975,673	1,426	DDR017D0	160	30.09	55.60	Upper	242	0.35	0.19	Dominion
-60,341	-2,975,673	1,426	DDR017D0	100	34.82	10.13	Lower	72	0.10	0.35	Dominion
-60,341	-2,975,673	1,426	DDR017D1	160	28.65	43.35	Upper	269	0.27	0.18	Dominion
-60,341	-2,975,673	1,426	DDR017D1	100	87.31	11.10	Lower	63	0.11	0.87	Dominion

-60,341	-2,975,673	1,426	DDR017D2	160	619.66	40.15	Upper	269	0.25	3.87	Dominion		
-60,341	-2,975,673	1,426	DDR017D2	100	51.88	9.35	Lower	60	0.09	0.52	Dominion		
-60,171	-2,975,655	1,427	DDR018D0	139	119.14	113.95	Upper	139	0.82	0.86	Dominion		
-60,171	-2,975,655	1,427	DDR018D0	100	9.32	0.73	Lower	17	0.01	0.09	Dominion		
-60,171	-2,975,655	1,427	DDR018D1	144	94.23	97.27	Upper	144	0.67	0.65	Dominion		
-60,171	-2,975,655	1,427	DDR018D1	100	106.65	0.85	Lower	16	0.01	1.07	Dominion		
-60,233	-2,975,895	1,425	DDR019D1	160	19.43	47.95	Upper	279	0.30	0.12	Dominion		
-60,233	-2,975,895	1,425	DDR019D1	160	60.08	57.70	Lower	375	0.36	0.38	Dominion		
-60,233	-2,975,895	1,425	DDR019D2	160	15.21	31.88	Upper	281	0.20	0.10	Dominion		
-60,233	-2,975,895	1,425	DDR019D2	160	55.95	79.08	Lower	357	0.49	0.35	Dominion		
-59,986	-2,976,212	1,423	DDR020D0	100	507.71	23.97	Upper	60	0.24	5.08	Dominion		
-59,986	-2,976,212	1,423	DDR020D0	100	0.00	0.00	Lower	0	0.00	0.00	Dominion		
-60,152	-2,976,193	1,423	DDR021D0	Abandoned									
-60,121	-2,972,096	1,453	DDR022D0	100	51.07	49.40	Upper	32	0.49	0.51	Dominion		
-60,121	-2,972,096	1,453	DDR022D0	100	6.63	8.48	Lower	21	0.08	0.07	Dominion		
-60,121	-2,972,096	1,453	DDR022D2	100	141.52	92.87	Upper	96	0.93	1.42	Dominion		
-60,121	-2,972,096	1,453	DDR022D2	100	0.38	1.17	Lower	31	0.01	0.00	Dominion		
-59,902	-2,973,209	1,445	DDR023D0	100	72.20	3.16	Upper	44	0.03	0.72	Dominion		
-59,902	-2,973,209	1,445	DDR023D0	100	0.25	0.03	Lower	17	0.00	0.00	Dominion		
-59,904	-2,972,960	1,446	DDR024D0	100	22.15	1.68	Upper	19	0.02	0.22	Dominion		
-59,904	-2,972,960	1,446	DDR024D0	100	0.00	0.00	Lower	0	0.00	0.00	Dominion		
-60,120	-2,972,296	1,452	DDR025D0	144	136.40	77.75	Upper	144	0.54	0.95	Dominion		
-60,120	-2,972,296	1,452	DDR025D0	100	0.00	0.00	Lower	0	0.00	0.00	Dominion		
-60,120	-2,972,296	1,452	DDR025D1	147	155.24	75.08	Upper	147	0.51	1.06	Dominion		
-60,120	-2,972,296	1,452	DDR025D1	100	0.00	0.00	Lower	0	0.00	0.00	Dominion		
-60,312	-2,972,295	1,454	DDR026D0	137	20.47	34.92	Upper	137	0.26	0.15	Dominion		
-60,312	-2,972,295	1,454	DDR026D0	100	0.09	2.11	Lower	18	0.02	0.00	Dominion		
-60,312	-2,972,295	1,454	DDR026D1	155	14.45	32.16	Upper	155	0.21	0.09	Dominion		
-60,312	-2,972,295	1,454	DDR026D1	100	0.55	7.63	Lower	16	0.08	0.01	Dominion		
-60,119	-2,972,496	1,451	DDR027D0	100	39.14	22.23	Upper	23	0.22	0.39	Dominion		
-60,119	-2,972,496	1,451	DDR027D0	100	0.00	0.00	Lower	0	0.00	0.00	Dominion		
-60,119	-2,972,496	1,451	DDR027D1	100	19.08	22.15	Upper	19	0.22	0.19	Dominion		
-60,119	-2,972,496	1,451	DDR027D1	100	0.00	0.00	Lower	0	0.00	0.00	Dominion		
-60,310	-2,972,496	1,452	DDR028D0	160	103.17	60.15	Upper	204	0.38	0.64	Dominion		
-60,310	-2,972,496	1,452	DDR028D0	100	56.88	183.31	Lower	51	1.83	0.57	Dominion		
-60,310	-2,972,496	1,452	DDR028D1	160	145.62	66.96	Upper	206	0.42	0.91	Dominion		
-60,310	-2,972,496	1,452	DDR028D1	100	22.81	136.10	Lower	47	1.36	0.23	Dominion		
-59,922	-2,972,780	1,447	DDR029D0	100	0.73	1.04	Upper	20	0.01	0.01	Dominion		
-59,922	-2,972,780	1,447	DDR029D0	100	0.00	0.00	Lower	0	0.00	0.00	Dominion		
-60,228	-2,972,706	1,450	DDR030D0	100	32.52	16.30	Upper	100	0.16	0.33	Dominion		
-60,228	-2,972,706	1,450	DDR030D0	100	0.14	0.59	Lower	28	0.01	0.00	Dominion		
-60,228	-2,972,706	1,450	DDR030D1	111	15.94	11.06	Upper	111	0.10	0.14	Dominion		
-60,228	-2,972,706	1,450	DDR030D1	100	0.17	0.42	Lower	14	0.00	0.00	Dominion		
-60,739	-2,973,270	1,444	DDR031D0	160	152.02	118.69	Upper	170	0.74	0.95	Dominion		
-60,739	-2,973,270	1,444	DDR031D0	100	0.00	0.00	Lower	0	0.00	0.00	Dominion		
-60,739	-2,973,270	1,444	DDR031D1	160	156.79	150.49	Upper	165	0.94	0.98	Dominion		
-60,739	-2,973,270	1,444	DDR031D1	100	0.00	0.00	Lower	0	0.00	0.00	Dominion		
-60,739	-2,973,270	1,444	DDR031D3	160	138.95	114.31	Upper	167	0.71	0.87	Dominion		
-60,739	-2,973,270	1,444	DDR031D3	100	0.00	0.00	Lower	0	0.00	0.00	Dominion		
60,252	-2,976,409	1,421	DDR032D0	160	49.24	32.81	Upper	194	0.21	0.31	Dominion		
60,252	-2,976,409	1,421	DDR032D0	100	0.00	0.00	Lower	0	0.00	0.00	Dominion		

60,252	-2,976,409	1,421	DDR032D1	160	52.75	46.93	Upper	186	0.29	0.33	Dominion		
60,252	-2,976,409	1,421	DDR032D1	100	0.00	0.00	Lower	0	0.00	0.00	Dominion		
-59,978	-2,976,427	1,422	DDR033D0	160	201.41	77.88	Upper	174	0.49	1.26	Dominion		
-59,978	-2,976,427	1,422	DDR033D0	100	0.00	0.00	Lower	0	0.00	0.00	Dominion		
-60,741	-2,973,071	1,447	DDR034D0	160	68.76	150.23	Upper	257	0.94	0.43	Dominion		
-60,741	-2,973,071	1,447	DDR034D1	160	2.67	8.18	Lower	473	0.05	0.02	Dominion		
-60,741	-2,973,071	1,447	DDR034D2	160	64.67	144.14	Upper	248	0.90	0.40	Dominion		
-60,741	-2,973,071	1,447	DDR034D2	160	8.30	8.16	Lower	474	0.05	0.05	Dominion		
-60,741	-2,973,071	1,447	DDR034D3	160	82.45	125.62	Upper	255	0.79	0.52	Dominion		
-60,741	-2,973,071	1,447	DDR034D3	160	1.71	7.15	Lower	509	0.04	0.01	Dominion		
-60,740	-2,973,469	1,442	DDR035D0	Faulted			Upper	Faulted			Dominion		
-60,740	-2,973,469	1,442	DDR035D0	Faulted			Lower	Faulted			Dominion		
-60,740	-2,973,469	1,442	DDR035D1	160	190.62	38.40	Upper	297	0.24	1.19	Dominion		
-60,740	-2,973,469	1,442	DDR035D1	160	14.05	3.77	Lower	525	0.02	0.09	Dominion		
-60,740	-2,973,469	1,442	DDR035D2	160	99.73	37.42	Upper	272	0.23	0.62	Dominion		
-60,740	-2,973,469	1,442	DDR035D2	160	16.29	4.21	Lower	528	0.03	0.10	Dominion		
-60,739	-2,972,560	1,453	DDR036D0	160	31.88	29.96	Upper	264	0.19	0.20	Dominion		
-60,739	-2,972,560	1,453	DDR036D0	100	0.12	0.62	Lower	24	0.01	0.00	Dominion		
-60,739	-2,972,560	1,453	DDR036D1	160	65.43	45.98	Upper	240	0.29	0.41	Dominion		
-60,739	-2,972,560	1,453	DDR036D1	100	23.71	16.74	Lower	21	0.17	0.24	Dominion		
-60,183	-2,976,076	1,424	DDR037D0	160	26.24	43.42	Upper	246	0.27	0.16	Dominion		
-60,183	-2,976,076	1,424	DDR037D0	100	0.00	0.00	Lower	0	0.00	0.00	Dominion		
-60,183	-2,976,076	1,424	DDR037D1	160	18.93	35.59	Upper	244	0.22	0.12	Dominion		
-60,183	-2,976,076	1,424	DDR037D1	100	0.00	0.00	Lower	0	0.00	0.00	Dominion		
-60,270	-2,975,756	1,426	DDR039D0	160	15.49	46.55	Upper	243	0.29	0.10	Dominion		
-60,270	-2,975,756	1,426	DDR039D0	100	266.99	10.54	Lower	52	0.11	2.67	Dominion		
-60,270	-2,975,756	1,426	DDR039D1	160	23.71	48.90	Upper	211	0.31	0.15	Dominion		
-60,270	-2,975,756	1,426	DDR039D1	100	308.43	10.72	Lower	56	0.11	3.08	Dominion		
-60,268	-2,975,525	1,428	DDR040D0	160	17.13	49.73	Upper	208	0.31	0.11	Dominion		
-60,268	-2,975,525	1,428	DDR040D0	100	643.96	10.73	Lower	32	0.11	6.44	Dominion		
-60,268	-2,975,525	1,428	DDR040D1	160	12.08	39.81	Upper	214	0.25	0.08	Dominion		
-60,268	-2,975,525	1,428	DDR040D1	100	29.73	5.11	Lower	49	0.05	0.30	Dominion		
-60,265	-2,975,277	1,429	DDR041D0	Abandoned									
-60,257	-2,975,014	1,430	DDR042D0	Abandoned									
-60,641	-2,975,837	1,424	DDR043D0	160	127.34	140.83	Upper	315	0.88	0.80	Dominion		
-60,641	-2,975,837	1,424	DDR043D0	122	269.44	18.24	Lower	122	0.15	2.21	Dominion		
-60,641	-2,975,837	1,424	DDR043D1	160	121.47	103.13	Upper	307	0.64	0.76	Dominion		
-60,641	-2,975,837	1,424	DDR043D1	115	308.25	22.97	Lower	115	0.20	2.67	Dominion		
-60,668	-2,975,648	1,425	DDR044D0	160	13.61	27.04	Upper	234	0.17	0.09	Dominion		
-60,668	-2,975,648	1,425	DDR044D0	109	24.25	20.93	Lower	109	0.19	0.22	Dominion		
-60,668	-2,975,648	1,425	DDR044D1	160	16.68	26.84	Upper	248	0.17	0.10	Dominion		
-60,668	-2,975,648	1,425	DDR044D1	104	13.65	11.32	Lower	104	0.11	0.13	Dominion		
-60,660	-2,975,398	1,427	DDR045D0	160	121.07	8.94	Upper	605	0.06	0.76	Dominion		
-60,660	-2,975,398	1,427	DDR045D0	100	0.00	0.00	Lower	0	0.00	0.00	Dominion		
-60,660	-2,975,398	1,427	DDR045D1	160	112.24	68.52	Upper	575	0.43	0.70	Dominion		
-60,660	-2,975,398	1,427	DDR045D1	100	0.00	0.00	Lower	0	0.00	0.00	Dominion		
-60,667	-2,975,194	1,428	DDR046D0	160	44.93	61.28	Upper	256	0.38	0.28	Dominion		
-60,667	-2,975,194	1,428	DDR046D0	160	629.48	29.64	Lower	309	0.19	3.93	Dominion		
-60,667	-2,975,194	1,428	DDR046D1	160	26.58	52.91	Upper	299	0.33	0.17	Dominion		
-60,667	-2,975,194	1,428	DDR046D1	160	376.34	18.99	Lower	352	0.12	2.35	Dominion		

-60,638	-2,974,885	1,430	DDR047D0	160	98.66	76.40	Upper	166	0.48	0.62	Dominion
-60,638	-2,974,885	1,430	DDR047D0	160	154.29	32.11	Lower	328	0.20	0.96	Dominion
-60,638	-2,974,885	1,430	DDR047D1	160	113.17	65.52	Upper	162	0.41	0.71	Dominion
-60,638	-2,974,885	1,430	DDR047D1	160	45.47	28.13	Lower	316	0.18	0.28	Dominion
-60,636	-2,974,610	1,432	DDR048D0	160	23.29	24.28	Upper	170	0.15	0.15	Dominion
-60,636	-2,974,610	1,432	DDR048D0	100	27.08	12.64	Lower	38	0.13	0.27	Dominion
-60,515	-2,972,494	1,453	DDR050D0	122	105.13	74.32	Upper	122	0.61	0.86	Dominion
-60,515	-2,972,494	1,453	DDR050D0	100	0.08	2.40	Lower	16	0.02	0.00	Dominion
-54,723	-2,965,395	1,393	DRT001D0	100	63.81	38.83	Upper	59	0.39	0.64	Rietkuil
-54,723	-2,965,395	1,393	DRT001D0	100	4.43	9.49	Lower	19	0.09	0.04	Rietkuil
-54,594	-2,965,197	1,400	DRT002D0	160	32.57	48.96	Upper	199	0.31	0.20	Rietkuil
-54,594	-2,965,197	1,400	DRT002D0	100	0.89	1.54	Lower	20	0.02	0.01	Rietkuil
-54,354	-2,965,296	1,391	DRT003D0	100	53.31	36.53	Upper	97	0.37	0.53	Rietkuil
-54,354	-2,965,296	1,391	DRT003D0	100	70.29	23.67	Lower	20	0.24	0.70	Rietkuil
-54,354	-2,965,296	1,391	DRT003D1	100	52.88	47.70	Upper	89	0.48	0.53	Rietkuil
-54,354	-2,965,296	1,391	DRT003D1	100	256.42	37.43	Lower	19	0.37	2.56	Rietkuil
-54,534	-2,965,596	1,390	DRT004D0	Faulted			Upper	Faulted			Rietkuil
-54,534	-2,965,596	1,390	DRT004D0	Faulted			Lower	Faulted			Rietkuil
-54,534	-2,965,596	1,390	DRT004D1	Faulted			Upper	Faulted			Rietkuil
-54,534	-2,965,596	1,390	DRT004D1	Faulted			Lower	Faulted			Rietkuil
-54,795	-2,965,609	1,391	DRT005D0	100	49.33	99.80	Upper	82	1.00	0.49	Rietkuil
-54,795	-2,965,609	1,391	DRT005D0	100	10.01	22.10	Lower	20	0.22	0.10	Rietkuil
-54,795	-2,965,609	1,391	DRT005D1	103	39.71	78.89	Upper	103	0.76	0.38	Rietkuil
-54,795	-2,965,609	1,391	DRT005D1	Faulted			Lower	Faulted			Rietkuil
-54,853	-2,965,461	1,393	DRT006D0	Faulted			Upper	Faulted			Rietkuil
-54,853	-2,965,461	1,393	DRT006D0	100	292.40	11.51	Lower	15	0.12	2.92	Rietkuil
-54,468	-2,965,035	1,403	DRT007D0	160	16.93	17.59	Upper	171	0.11	0.11	Rietkuil
-54,468	-2,965,035	1,403	DRT007D0	100	8.46	8.08	Lower	18	0.08	0.08	Rietkuil
-54,468	-2,965,035	1,403	DRT007D1	137	25.26	21.74	Upper	137	0.16	0.18	Rietkuil
-54,468	-2,965,035	1,403	DRT007D1	100	3.38	12.57	Lower	18	0.13	0.03	Rietkuil
-54,157	-2,965,091	1,398	DRT008D0	Faulted			Upper	Faulted			Rietkuil
-54,157	-2,965,091	1,398	DRT008D0	Faulted			Lower	Faulted			Rietkuil
-54,935	-2,965,732	1,392	DRT009D0	Faulted			Upper	Faulted			Rietkuil
-54,935	-2,965,732	1,392	DRT009D0	Faulted			Lower	Faulted			Rietkuil
-54,747	-2,965,811	1,391	DRT010D0	Faulted			Upper	Faulted			Rietkuil
-54,747	-2,965,811	1,391	DRT010D0	Faulted			Lower	Faulted			Rietkuil
-54,747	-2,965,811	1,391	DRT010D1	Faulted			Upper	Faulted			Rietkuil
-54,747	-2,965,811	1,391	DRT010D1	Faulted			Lower	Faulted			Rietkuil
-55,084	-2,965,880	1,394	DRT011D0	Faulted			Upper	Faulted			Rietkuil
-55,084	-2,965,880	1,394	DRT011D0	Faulted			Lower	Faulted			Rietkuil
-54,185	-2,964,842	1,405	DRT012D0	Faulted			Upper	Faulted			Rietkuil
-54,185	-2,964,842	1,405	DRT012D0	Faulted			Lower	Faulted			Rietkuil
-54,185	-2,964,842	1,405	DRT012D1	100	113.25	64.53	Upper	54	0.65	1.13	Rietkuil
-54,185	-2,964,842	1,405	DRT012D1	100	1.27	2.80	Lower	26	0.03	0.01	Rietkuil
-53,937	-2,964,477	1,409	DRT013D0	100	0.00	0.00	Upper	0	0.00	0.00	Rietkuil
-53,937	-2,964,477	1,409	DRT013D0	100	0.00	0.00	Lower	0	0.00	0.00	Rietkuil
-53,684	-2,964,469	1,406	DRT014D0	100	0.00	0.00	Upper	0	0.00	0.00	Rietkuil
-53,684	-2,964,469	1,406	DRT014D0	100	0.00	0.00	Lower	0	0.00	0.00	Rietkuil
-54,047	-2,964,644	1,407	DRT015D0	Faulted			Upper	Faulted			Rietkuil
-54,047	-2,964,644	1,407	DRT015D0	Faulted			Lower	Faulted			Rietkuil

-53,809	-2,964,762	1,401	DRT016D0	Faulted			Upper	Faulted			Rietkuil
-53,809	-2,964,762	1,401	DRT016D0	Faulted			Lower	Faulted			Rietkuil
-51,973	-2,965,764	1,399	DRT017D0	142	13.18	49.93	Upper	142	0.35	0.09	Rietkuil
-51,973	-2,965,764	1,399	DRT017D0	100	0.00	0.00	Lower	0	0.00	0.00	Rietkuil
-51,973	-2,965,764	1,399	DRT017D1	132	79.42	51.18	Upper	132	0.39	0.60	Rietkuil
-51,973	-2,965,764	1,399	DRT017D1	100	0.00	0.00	Lower	0	0.00	0.00	Rietkuil
-51,953	-2,965,085	1,412	DRT018D0	160	23.03	68.69	Upper	184	0.43	0.14	Rietkuil
-51,953	-2,965,085	1,412	DRT018D0	100	0.00	0.00	Lower	0	0.00	0.00	Rietkuil
-52,014	-2,964,948	1,414	DRT019D0	100	49.28	60.21	Upper	28	0.60	0.49	Rietkuil
-52,014	-2,964,948	1,414	DRT019D0	100	0.00	0.00	Lower	0	0.00	0.00	Rietkuil
-52,155	-2,965,453	1,404	DRT020D0	100	82.70	78.28	Upper	49	0.78	0.83	Rietkuil
-52,155	-2,965,453	1,404	DRT020D0	100	68.23	105.49	Upper	53	1.05	0.68	Rietkuil
-52,155	-2,965,453	1,404	DRT020D0	100	0.00	0.00	Lower	0	0.00	0.00	Rietkuil
-52,155	-2,965,453	1,404	DRT020D1	100	60.48	159.08	Upper	52	1.59	0.60	Rietkuil
-52,155	-2,965,453	1,404	DRT020D1	100	72.41	172.41	Upper	53	1.72	0.72	Rietkuil
-52,155	-2,965,453	1,404	DRT020D1	100	0.00	0.00	Lower	0	0.00	0.00	Rietkuil
-52,330	-2,964,850	1,412	DRT021D0	100	14.84	15.41	Upper	58	0.15	0.15	Rietkuil
-52,330	-2,964,850	1,412	DRT021D0	100	6.49	27.04	Lower	19	0.27	0.06	Rietkuil
-52,330	-2,964,850	1,412	DRT021D1	100	15.84	24.52	Upper	75	0.25	0.16	Rietkuil
-52,330	-2,964,850	1,412	DRT021D1	100	2.96	17.65	Lower	19	0.18	0.03	Rietkuil
-52,046	-2,964,786	1,416	DRT022D0	100	142.25	57.16	Upper	19	0.57	1.42	Rietkuil
-52,046	-2,964,786	1,416	DRT022D0	100	4.34	62.62	Lower	21	0.63	0.04	Rietkuil
-52,160	-2,964,581	1,417	DRT023D0	100	75.31	87.21	Upper	16	0.87	0.75	Rietkuil
-52,160	-2,964,581	1,417	DRT023D0	100	0.00	0.00	Lower	0	0.00	0.00	Rietkuil
-52,381	-2,964,637	1,415	DRT024D0	Faulted			Upper	Faulted			Rietkuil
-52,381	-2,964,637	1,415	DRT024D0	100	0.50	11.55	Lower	21	0.12	0.01	Rietkuil
-52,381	-2,964,637	1,415	DRT024D1	100	73.47	78.05	Upper	43	0.78	0.73	Rietkuil
-52,381	-2,964,637	1,415	DRT024D1	100	0.68	9.32	Lower	25	0.09	0.01	Rietkuil
-52,039	-2,965,378	1,406	DRT025D0	100	182.74	172.31	Upper	89	1.72	1.83	Rietkuil
-52,039	-2,965,378	1,406	DRT025D0	100	2.01	3.05	Lower	18	0.03	0.02	Rietkuil
-52,039	-2,965,378	1,406	DRT025D1	100	100.37	161.22	Upper	86	1.61	1.00	Rietkuil
-52,039	-2,965,378	1,406	DRT025D1	100	2.24	10.46	Lower	25	0.10	0.02	Rietkuil
-52,068	-2,965,166	1,410	DRT026D0	100	53.45	56.61	Upper	78	0.57	0.53	Rietkuil
-52,068	-2,965,166	1,410	DRT026D0	100	0.00	0.00	Lower	0	0.00	0.00	Rietkuil
-52,068	-2,965,166	1,410	DRT026D1	100	57.52	55.66	Upper	75	0.56	0.58	Rietkuil
-52,068	-2,965,166	1,410	DRT026D1	100	0.00	0.00	Lower	0	0.00	0.00	Rietkuil
-52,279	-2,965,023	1,410	DRT027D0	100	68.88	123.60	Upper	36	1.24	0.69	Rietkuil
-52,279	-2,965,023	1,410	DRT027D0	100	1.54	12.24	Lower	20	0.12	0.02	Rietkuil
-52,279	-2,965,023	1,410	DRT027D1	100	54.91	179.65	Upper	36	1.80	0.55	Rietkuil
-52,279	-2,965,023	1,410	DRT027D1	100	1.59	8.60	Lower	18	0.09	0.02	Rietkuil
-52,262	-2,965,739	1,398	DRT028D0	120	35.66	52.26	Upper	120	0.44	0.30	Rietkuil
-52,262	-2,965,739	1,398	DRT028D0	100	3.23	6.05	Lower	19	0.06	0.03	Rietkuil
-52,262	-2,965,739	1,398	DRT028D1	141	48.62	96.72	Upper	141	0.68	0.34	Rietkuil
-52,262	-2,965,739	1,398	DRT028D1	100	0.86	8.01	Lower	23	0.08	0.01	Rietkuil
-52,537	-2,965,688	1,397	DRT029D0	100	89.51	61.80	Upper	83	0.62	0.90	Rietkuil
-52,537	-2,965,688	1,397	DRT029D0	100	1.12	11.75	Lower	19	0.12	0.01	Rietkuil
-52,537	-2,965,688	1,397	DRT029D1	100	114.93	63.10	Upper	79	0.63	1.15	Rietkuil
-52,537	-2,965,688	1,397	DRT029D1	100	0.93	0.33	Lower	30	0.00	0.01	Rietkuil
-52,537	-2,965,688	1,397	DRT029D2	100	106.17	66.72	Upper	90	0.67	1.06	Rietkuil
-52,537	-2,965,688	1,397	DRT029D2	100	3.03	26.37	Lower	19	0.26	0.03	Rietkuil

-52,655	-2,965,478	1,400	DRT030D0	125	79.21	138.76	Upper	125	1.11	0.64	Rietkuil
-52,655	-2,965,478	1,400	DRT030D1	111	78.56	202.57	Upper	111	1.82	0.71	Rietkuil
-52,655	-2,965,478	1,400	DRT030D2	137	222.83	210.25	Upper	137	1.54	1.63	Rietkuil
-52,655	-2,965,478	1,400	DRT030D2	100	1.90	31.96	Lower	19	0.32	0.02	Rietkuil
-54,227	-2,965,146	1,396	DRT031D0	Faulted			Upper	Faulted			Rietkuil
-54,227	-2,965,146	1,396	DRT031D0	Faulted			Lower	Faulted			Rietkuil
-53,948	-2,964,982	1,398	DRT032D0	100	29.48	15.39	Upper	49	0.15	0.29	Rietkuil
-53,948	-2,964,982	1,398	DRT032D0	100	0.00	0.00	Lower	0	0.00	0.00	Rietkuil
-53,948	-2,964,982	1,398	DRT032D1	100	16.61	13.41	Upper	23	0.13	0.17	Rietkuil
-53,948	-2,964,982	1,398	DRT032D1	100	0.00	0.00	Lower	0	0.00	0.00	Rietkuil
-52,511	-2,965,129	1,406	DRT034D0	126	0.63	125.13	Upper	126	0.99	0.01	Rietkuil
-52,511	-2,965,129	1,406	DRT034D0	100	1.06	11.55	Lower	18	0.12	0.01	Rietkuil
-52,439	-2,964,455	1,417	DRT035D0	100	3.71	27.80	Upper	14	0.28	0.04	Rietkuil
-52,439	-2,964,455	1,417	DRT035D0	100	0.97	7.34	Lower	19	0.07	0.01	Rietkuil
-52,439	-2,964,455	1,417	DRT035D1	Faulted			Upper	Faulted			Rietkuil
-52,439	-2,964,455	1,417	DRT035D1	100	1.46	5.92	Lower	23	0.06	0.01	Rietkuil
-52,748	-2,965,294	1,401	DRT036D0	129	30.17	59.07	Upper	129	0.46	0.23	Rietkuil
-52,748	-2,965,294	1,401	DRT036D0	100	2.44	4.28	Lower	20	0.04	0.02	Rietkuil
-52,748	-2,965,294	1,401	DRT036D1	135	34.32	56.30	Upper	135	0.42	0.25	Rietkuil
-52,748	-2,965,294	1,401	DRT036D1	100	0.50	14.67	Lower	20	0.15	0.01	Rietkuil
-52,748	-2,965,294	1,401	DRT036D2	135	55.87	62.70	Upper	135	0.46	0.41	Rietkuil
-52,748	-2,965,294	1,401	DRT036D2	100	0.67	6.35	Lower	24	0.06	0.01	Rietkuil
-52,886	-2,964,913	1,406	DRT037D0	100	82.46	41.27	Upper	64	0.41	0.82	Rietkuil
-52,886	-2,964,913	1,406	DRT037D0	100	1.29	2.23	Lower	22	0.02	0.01	Rietkuil
-52,886	-2,964,913	1,406	DRT037D1	100	90.13	35.74	Upper	63	0.36	0.90	Rietkuil
-52,886	-2,964,913	1,406	DRT037D1	100	0.50	4.39	Lower	19	0.04	0.01	Rietkuil
-53,719	-2,964,593	1,404	DRT038D0	100	23.37	19.37	Upper	20	0.19	0.23	Rietkuil
-53,719	-2,964,593	1,404	DRT038D0	100	0.00	0.00	Lower	0	0.00	0.00	Rietkuil
-53,719	-2,964,593	1,404	DRT038D1	100	15.91	8.73	Upper	16	0.09	0.16	Rietkuil
-53,719	-2,964,593	1,404	DRT038D1	100	0.00	0.00	Lower	0	0.00	0.00	Rietkuil
-52,704	-2,964,680	1,411	DRT039D0	100	139.23	41.08	Upper	78	0.41	1.39	Rietkuil
-52,704	-2,964,680	1,411	DRT039D0	100	0.50	5.55	Lower	19	0.06	0.01	Rietkuil
-52,704	-2,964,680	1,411	DRT039D1	100	255.66	70.94	Upper	72	0.71	2.56	Rietkuil
-52,704	-2,964,680	1,411	DRT039D1	100	0.68	7.25	Lower	17	0.07	0.01	Rietkuil
-52,479	-2,964,253	1,419	DRT040D0	100	185.58	148.22	Upper	25	1.48	1.86	Rietkuil
-52,479	-2,964,253	1,419	DRT040D0	100	1.58	1.95	Lower	19	0.02	0.02	Rietkuil
-52,479	-2,964,253	1,419	DRT040D1	100	115.48	7.37	Upper	16	0.07	1.15	Rietkuil
-52,479	-2,964,253	1,419	DRT040D1	100	0.65	0.56	Lower	27	0.01	0.01	Rietkuil
-52,204	-2,964,387	1,419	DRT041D0	100	8.83	32.04	Upper	59	0.32	0.09	Rietkuil
-52,204	-2,964,387	1,419	DRT041D0	100	0.61	0.75	Lower	38	0.01	0.01	Rietkuil
-52,203	-2,964,185	1,420	DRT042D0	100	0.00	0.00	Upper	0	0.00	0.00	Rietkuil
-52,203	-2,964,185	1,420	DRT042D0	100	0.00	0.00	Lower	0	0.00	0.00	Rietkuil
-52,203	-2,964,185	1,420	DRT043D0	100	205.94	225.95	Upper	17	2.26	2.06	Rietkuil
-52,456	-2,963,996	1,422	DRT043D0	100	0.00	0.00	Lower	0	0.00	0.00	Rietkuil
-52,456	-2,963,996	1,422	DRT043D1	100	247.73	176.65	Upper	15	1.77	2.48	Rietkuil
-52,456	-2,963,996	1,422	DRT043D1	100	0.00	0.00	Lower	0	0.00	0.00	Rietkuil
-54,110	-2,964,730	1,406	DRT044D0	Faulted			Upper	Faulted			Rietkuil
-54,110	-2,964,730	1,406	DRT044D0	Faulted			Lower	Faulted			Rietkuil
-54,418	-2,965,417	1,390	DRT045D0	100	24.73	11.29	Upper	31	0.11	0.25	Rietkuil
-54,418	-2,965,417	1,390	DRT045D0	100	16.53	2.51	Lower	19	0.03	0.17	Rietkuil

-54,418	-2,965,417	1,390	DRT045D1	100	21.00	16.99	Upper	36	0.17	0.21	Rietkuil
-54,418	-2,965,417	1,390	DRT045D1	100	6.27	1.64	Lower	19	0.02	0.06	Rietkuil
-53,184	-2,964,718	1,404	DRT046D0	100	0.00	0.00	Upper	0	0.00	0.00	Rietkuil
-53,184	-2,964,718	1,404	DRT046D0	100	0.00	0.00	Lower	0	0.00	0.00	Rietkuil
-53,368	-2,964,955	1,399	DRT047D0	100	0.00	0.00	Upper	0	0.00	0.00	Rietkuil
-53,368	-2,964,955	1,399	DRT047D0	100	0.00	0.00	Lower	0	0.00	0.00	Rietkuil
-52,416	-2,965,886	1,396	DRT048D0	160	162.73	31.79	Upper	174	0.20	1.02	Rietkuil
-52,416	-2,965,886	1,396	DRT048D0	100	0.00	0.00	Lower	0	0.00	0.00	Rietkuil
-50,738	-2,966,159	1,393	DRT049D0	100	53.73	49.38	Upper	52	0.49	0.54	Rietkuil
-50,738	-2,966,159	1,393	DRT049D0	100	12.15	2.05	Lower	30	0.02	0.12	Rietkuil
-50,738	-2,966,159	1,393	DRT049D1	100	17.99	55.59	Upper	64	0.56	0.18	Rietkuil
-50,738	-2,966,159	1,393	DRT049D1	100	7.51	8.26	Lower	28	0.08	0.08	Rietkuil
-51,043	-2,965,984	1,397	DRT050D0	100	24.38	189.59	Upper	49	1.90	0.24	Rietkuil
-51,043	-2,965,984	1,397	DRT050D1	100	36.14	162.54	Upper	49	1.63	0.36	Rietkuil
-50,958	-2,966,266	1,393	DRT052D0	Faulted			Upper	Faulted			Rietkuil
-50,958	-2,966,266	1,393	DRT052D0	Faulted			Lower	Faulted			Rietkuil
-50,813	-2,965,831	1,396	DRT053D0	100	25.92	80.03	Upper	83	0.80	0.26	Rietkuil
-50,813	-2,965,831	1,396	DRT053D0	100	5.01	3.92	Lower	20	0.04	0.05	Rietkuil
-50,488	-2,966,002	1,392	DRT054D0	100	3.30	49.11	Upper	59	0.49	0.03	Rietkuil
-50,488	-2,966,002	1,392	DRT054D1	100	45.71	148.65	Upper	86	1.49	0.46	Rietkuil
-50,856	-2,966,612	1,388	DRT056D0	155	114.13	56.97	Upper	155	0.37	0.73	Rietkuil
-50,856	-2,966,612	1,388	DRT056D0	100	376.85	144.58	Lower	20	1.45	3.77	Rietkuil
-50,856	-2,966,612	1,388	DRT056D1	143	93.78	44.24	Upper	143	0.31	0.66	Rietkuil
-51,170	-2,966,816	1,386	DRT057D0	100	33.85	28.63	Upper	94	0.29	0.34	Rietkuil
-51,170	-2,966,816	1,386	DRT057D0	100	43.51	9.74	Lower	19	0.10	0.44	Rietkuil
-51,170	-2,966,816	1,386	DRT057D1	111	39.49	23.41	Upper	111	0.21	0.35	Rietkuil
-51,170	-2,966,816	1,386	DRT057D1	100	25.00	13.33	Lower	19	0.13	0.25	Rietkuil
-50,420	-2,966,433	1,386	DRT058D0	100	195.32	77.61	Upper	101	0.78	1.95	Rietkuil
-50,420	-2,966,433	1,386	DRT058D1	160	133.85	59.53	Upper	160	0.37	0.84	Rietkuil
-51,510	-2,966,024	1,397	DRT059D0	142	84.95	146.29	Upper	142	1.03	0.60	Rietkuil
-51,510	-2,966,024	1,397	DRT059D0	100	0.50	0.74	Lower	18	0.01	0.01	Rietkuil
-51,296	-2,966,425	1,391	DRT061D0	100	167.99	196.49	Upper	74	1.96	1.68	Rietkuil
-52,162	-2,964,959	1,412	TRX001D0	100	20.65	36.55	Upper	45	0.37	0.21	Rietkuil
-52,162	-2,964,959	1,412	TRX001D0	100	0.00	0.00	Lower	0	0.00	0.00	Rietkuil
-52,446	-2,965,358	1,403	TRX002D0	100	295.96	185.85	Upper	78	1.86	2.96	Rietkuil
-52,446	-2,965,358	1,403	TRX002D0	100	134.07	171.18	Upper	90	1.71	1.34	Rietkuil
-52,446	-2,965,358	1,403	TRX002D0	100	0.00	0.00	Lower	0	0.00	0.00	Rietkuil
-52,392	-2,965,529	1,401	TRX003D0	160	139.91	137.21	Upper	258	0.86	0.87	Rietkuil
-52,392	-2,965,529	1,401	TRX003D0	100	24.03	98.45	Lower	16	0.98	0.24	Rietkuil
-52,392	-2,965,529	1,401	TRX003D1	160	144.99	121.55	Upper	238	0.76	0.91	Rietkuil
-52,392	-2,965,529	1,401	TRX003D1	100	112.23	69.03	Lower	32	0.69	1.12	Rietkuil
-52,079	-2,965,893	1,397	TRX004D0	160	153.08	75.79	Upper	203	0.47	0.96	Rietkuil
-52,079	-2,965,893	1,397	TRX004D0	100	0.00	0.00	Lower	0	0.00	0.00	Rietkuil
-52,077	-2,965,583	1,402	TRX005D0	100	268.06	252.96	Upper	87	2.53	2.68	Rietkuil
-52,077	-2,965,583	1,402	TRX005D0	100	15.11	120.12	Lower	36	1.20	0.15	Rietkuil
-52,207	-2,965,259	1,402	TRX006D0	114	188.83	77.48	Upper	114	0.68	1.66	Rietkuil
-52,207	-2,965,259	1,402	TRX006D0	100	4.03	7.68	Lower	19	0.08	0.04	Rietkuil
-52,207	-2,965,259	1,402	TRX006D1	121	395.57	90.50	Upper	121	0.75	3.27	Rietkuil
-52,207	-2,965,259	1,402	TRX006D1	100	0.92	15.37	Lower	18	0.15	0.01	Rietkuil

Notes:

- (1) While assays are undertaken on each sample, the results are composited to represent a single mineralized length and grade, representing each reef intersection over a minimum of 100 cm.
- (2) Although the dip varies from borehole to borehole, average nominal dip correction factors of 0.906 (25 degrees) and 0.939 (20 degrees) have been applied for Rietkuil and Dominion, respectively.

M.H.G. Heyns, Pr.Sci.Nat. (SACNASP), MSAIMM, MGSSA, Consulting Geologist of *sxr Uranium One Inc.* is the Qualified Person responsible for the Dominion drilling program and has verified the data in the table above. Exploration data is acquired by the Corporation and its consultants under strict quality assurance and quality control protocols. Half-core assay samples are collected by appropriately qualified personnel. Samples are prepared at an onsite preparation facility managed by Superlabs Ltd. and are assayed at the Set Point Laboratory located in Johannesburg, South Africa, which is accredited under SANAS and ISO/IEC 17025. Gold assays are performed using conventional fire assay procedures and uranium assays are performed using x-ray fluorescence spectrometry on a pressed powder pellet or a borate fusion disc. Quality control procedures follow industry standard protocols and include the use of blind control samples.

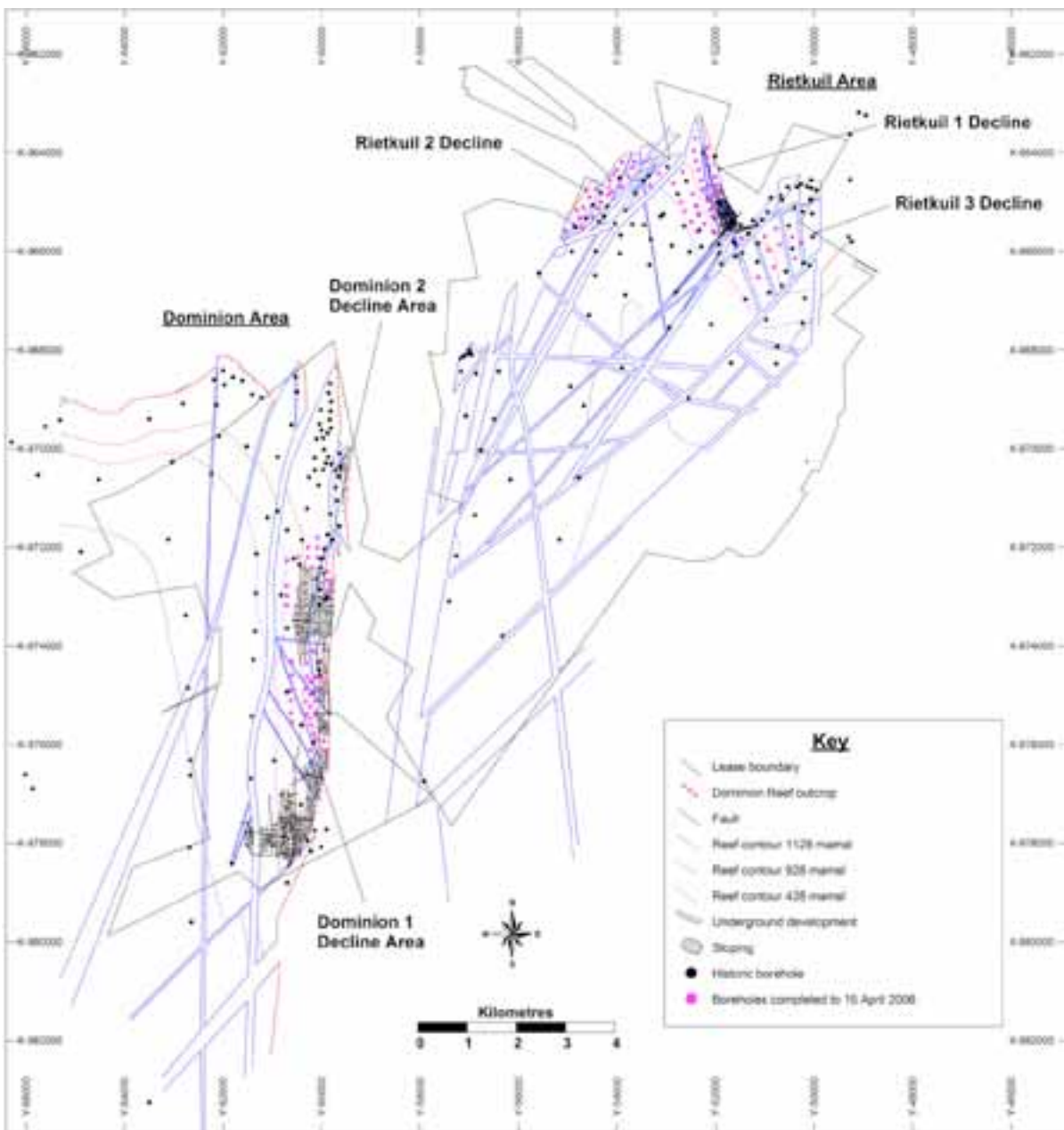


Figure 1: Historical and newer drill collar localities within the Rietkuil and Dominion blocks.

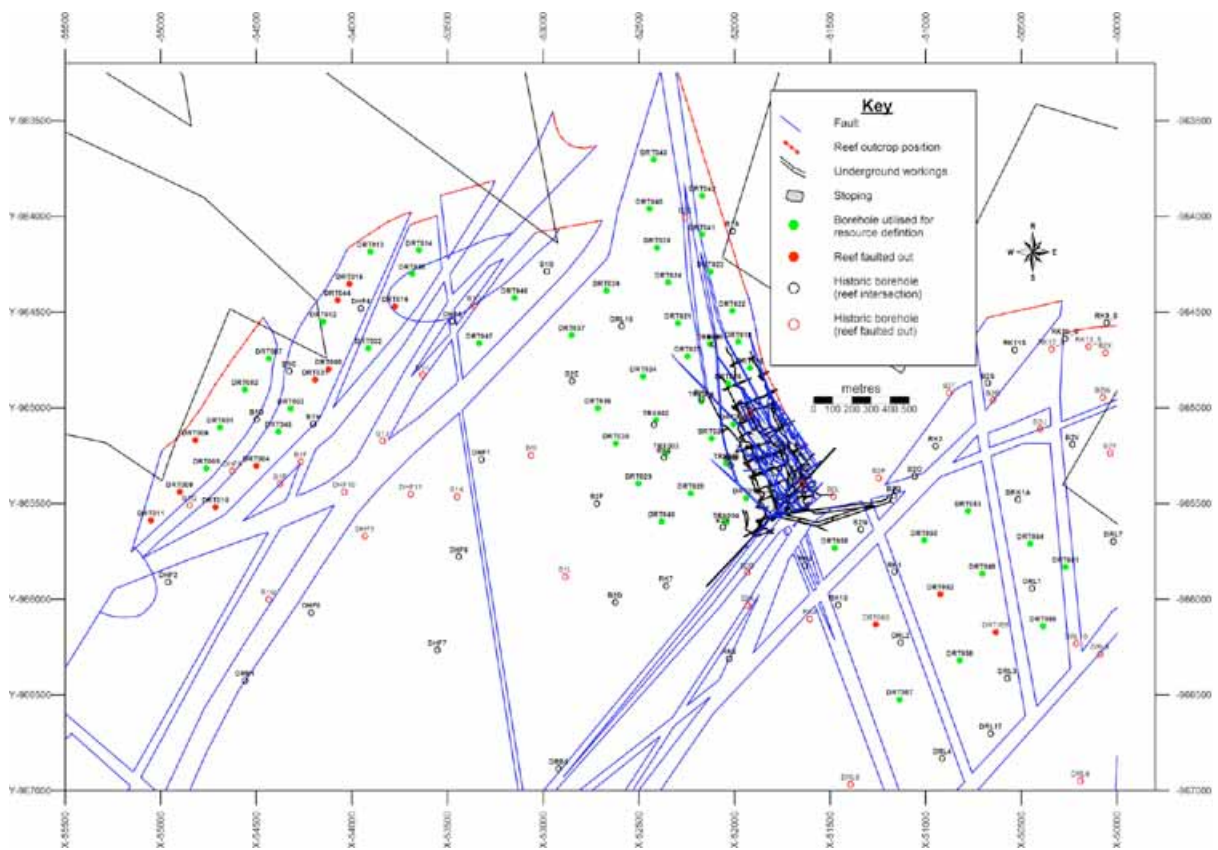


Figure 2: Detailed locality map, showing the recent Uranium One drilling (magenta collars) within the Rietkuil area.

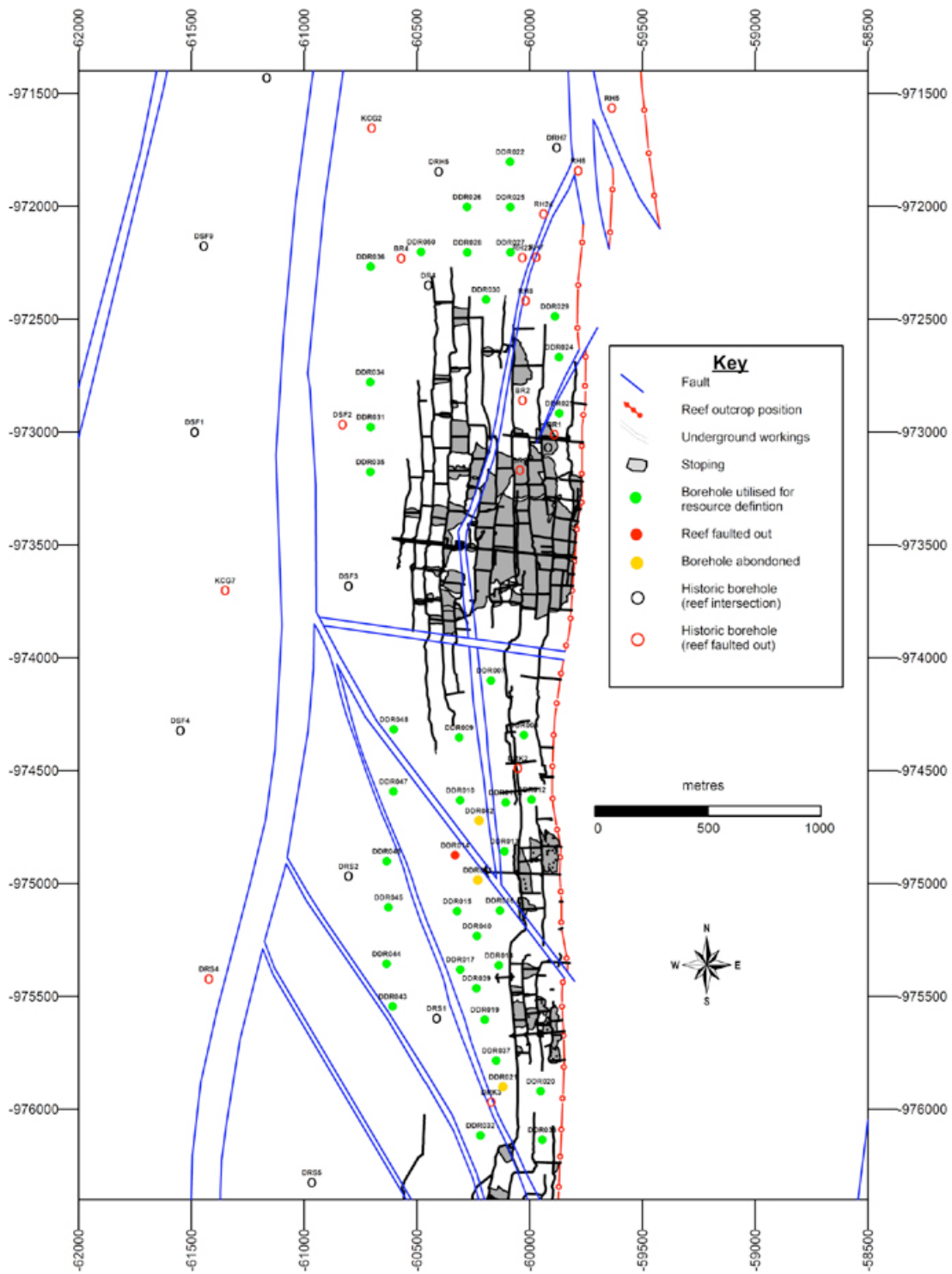


Figure 3: Detailed plan, showing the drill collar locations for the recent Uranium One diamond drill holes, as well as historical drill holes within the Dominion area.